



The view from your window  
will decide where you belong

rush  tower

#09, COUNCIL AVENUE, DEHIWALA.

Rush Tower is the home that you've always wanted.  
A home without compromises set in the heart of Dehiwela.  
A home for people who have lived, worked or travelled across the  
globe and experienced the best.

Designed to international standards and specifications by the  
Rush Lanka Group,

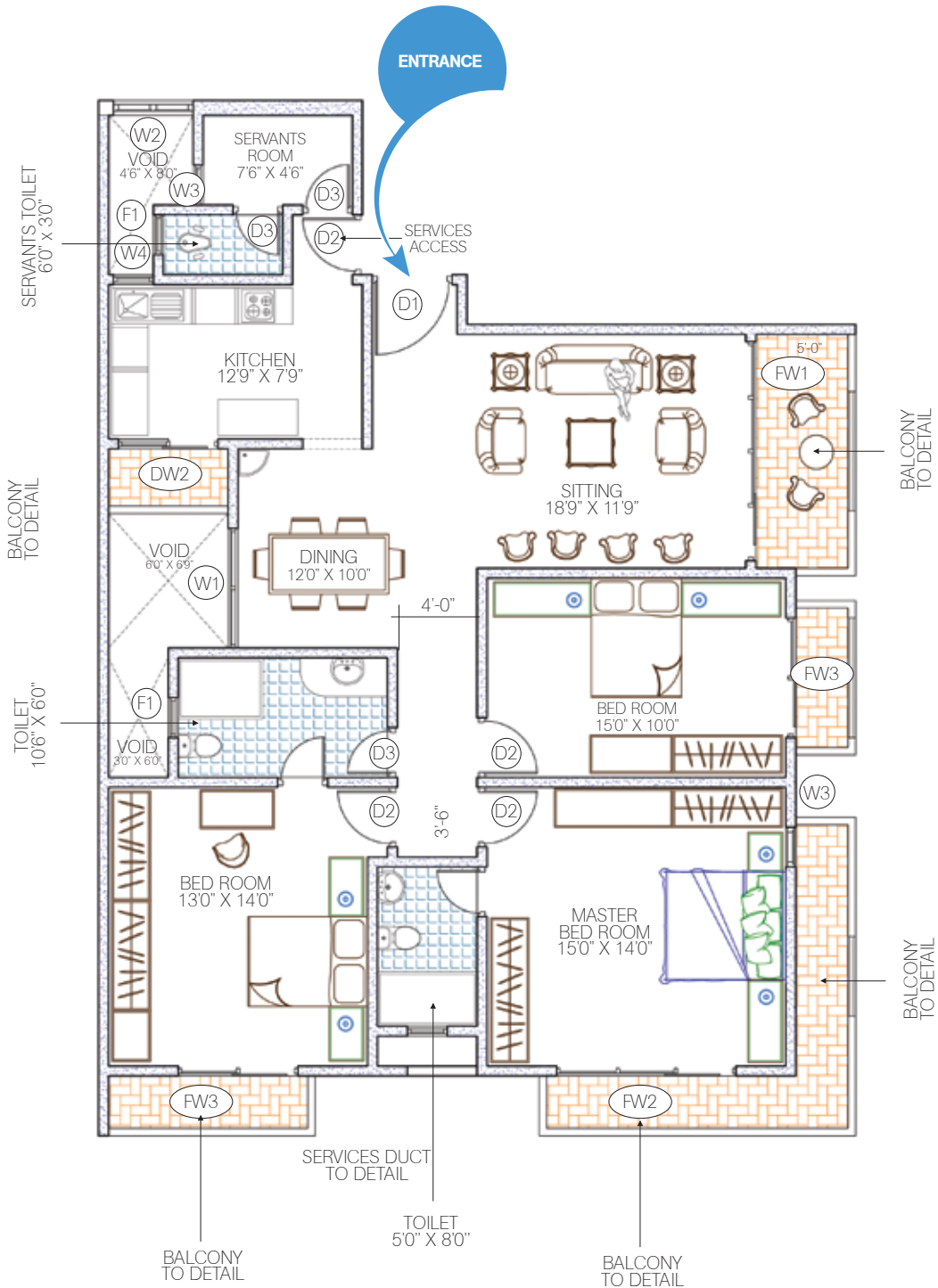
Rush Tower is architecturally nuanced to take  
advantage of its location.

It's a virtual ocean of peace and tranquility – amidst the hustle  
and bustle of one of Dehiwala emerging hubs.

Rush Tower follows a contemporary architectural style  
that promises to transform the Dehiwala skyline.

It translates into a unique blend of space, views,  
aesthetics, and design.





Note : Terms & Conditions apply. This Presentation is not to be construed as a binding offer.



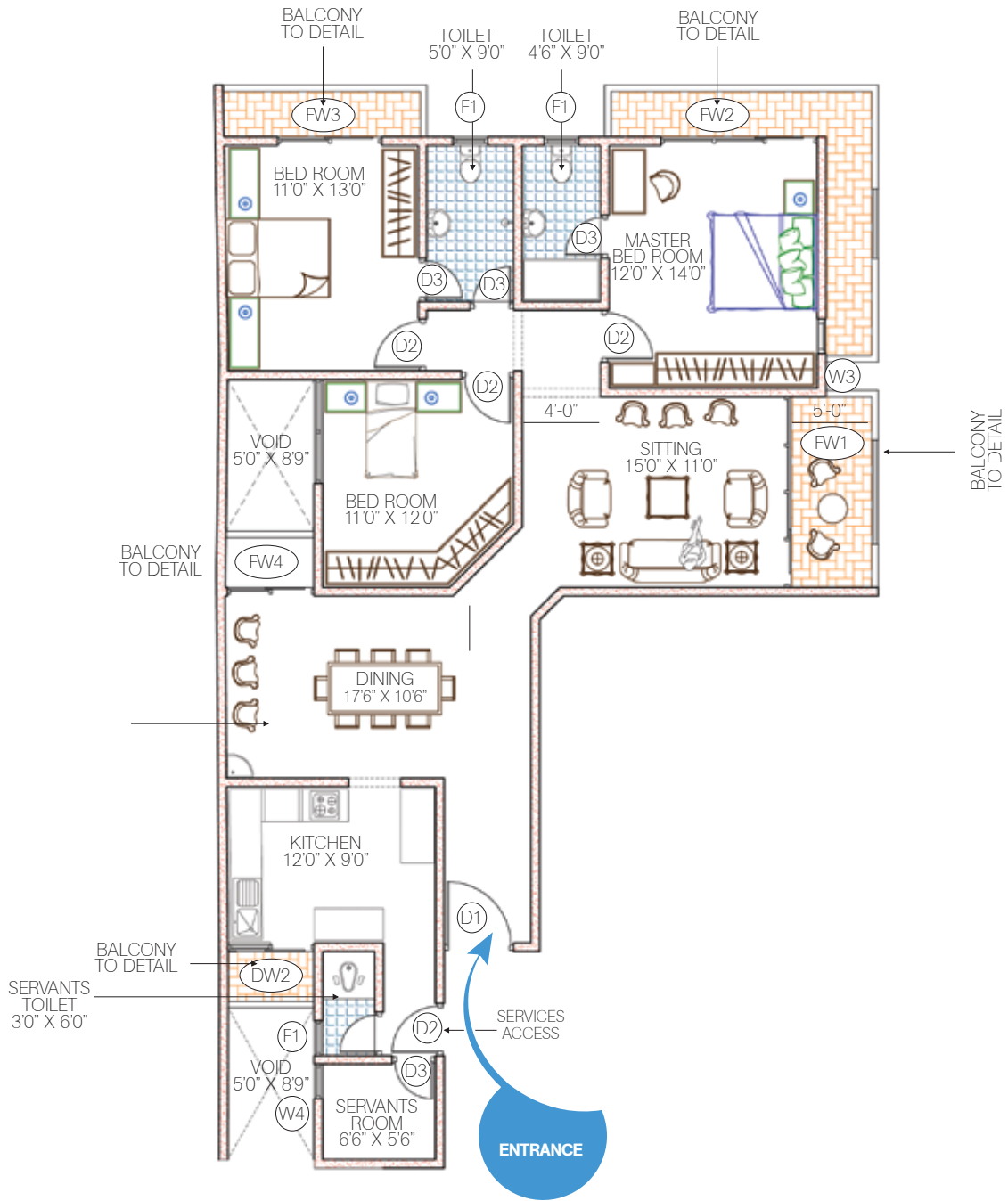
[www.rushlankagroup.lk](http://www.rushlankagroup.lk)

[www.rushlankagroup.com](http://www.rushlankagroup.com)

UNIT A  
Floor Area - 1530 sqft



Note : Terms & Conditions apply. This Presentation is not to be construed as a binding offer.



Note : Terms & Conditions apply. This Presentation is not to be construed as a binding offer.





[www.rushlankagroup.lk](http://www.rushlankagroup.lk)

[www.rushlankagroup.com](http://www.rushlankagroup.com)

UNIT B

Floor Area - 1490 sqft



Note : Terms & Conditions apply. This Presentation is not to be construed as a binding offer.

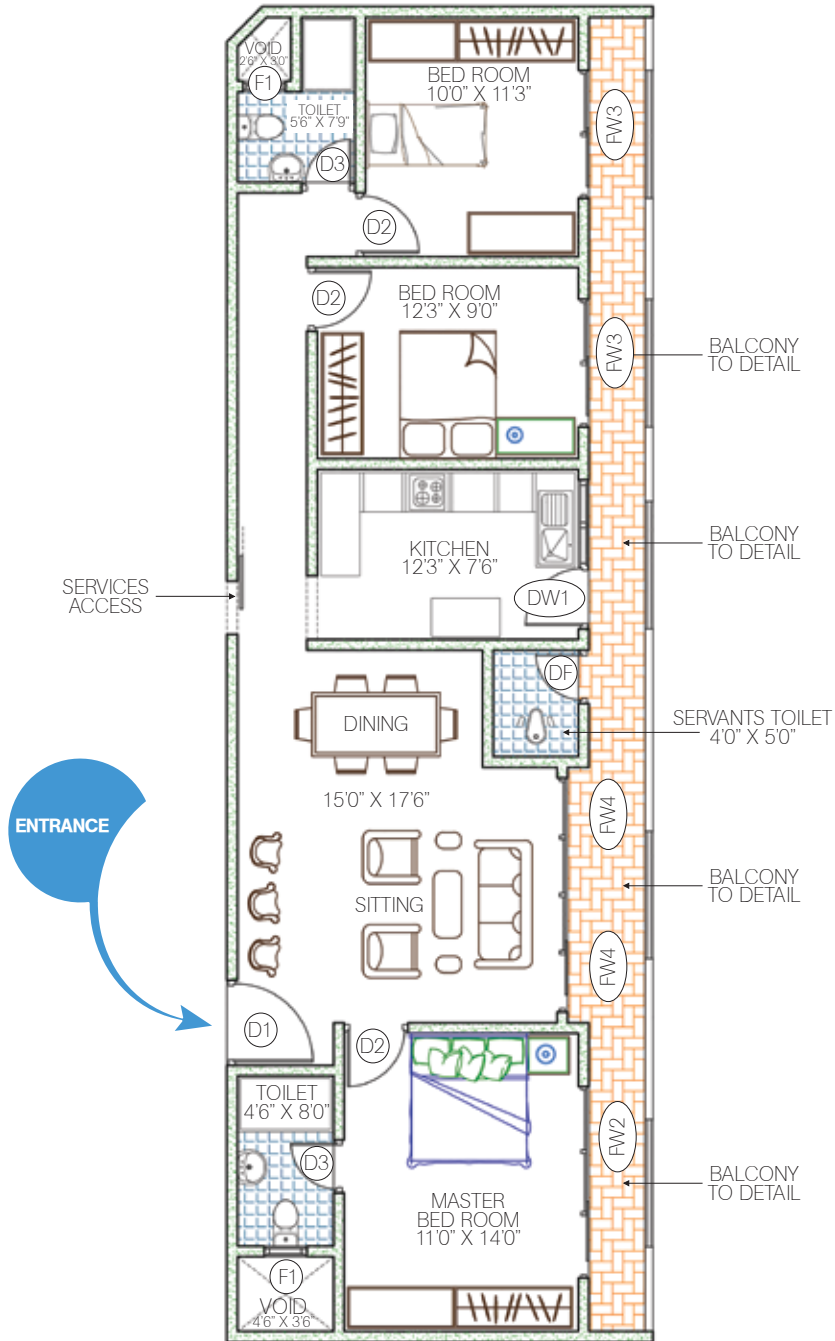
rush  tower



www.rushlankagroup.lk

www.rushlankagroup.com

UNIT C  
Floor Area - 1200 sqft



Note : Terms & Conditions apply. This Presentation is not to be construed as a binding offer.





[www.rushlankagroup.lk](http://www.rushlankagroup.lk)

[www.rushlankagroup.com](http://www.rushlankagroup.com)

UNIT C  
Floor Area - 1200 sqft



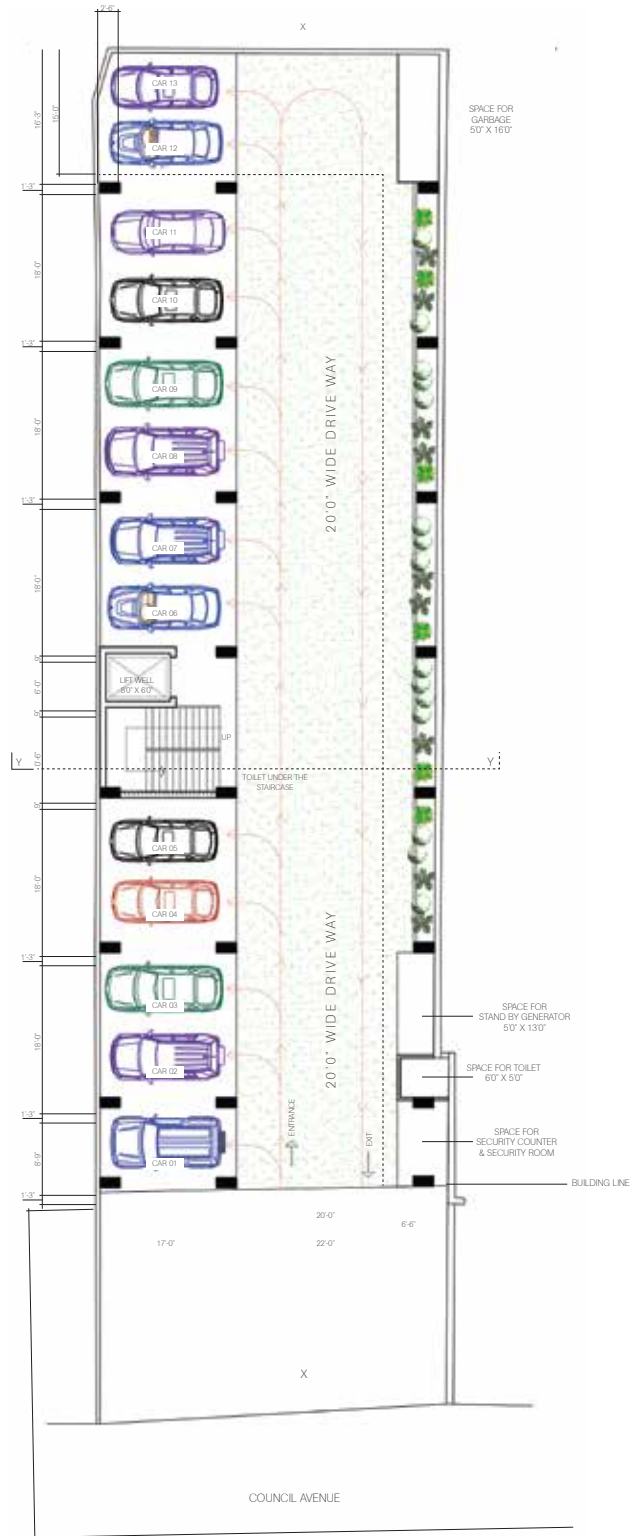
Note : Terms & Conditions apply. This Presentation is not to be construed as a binding offer.



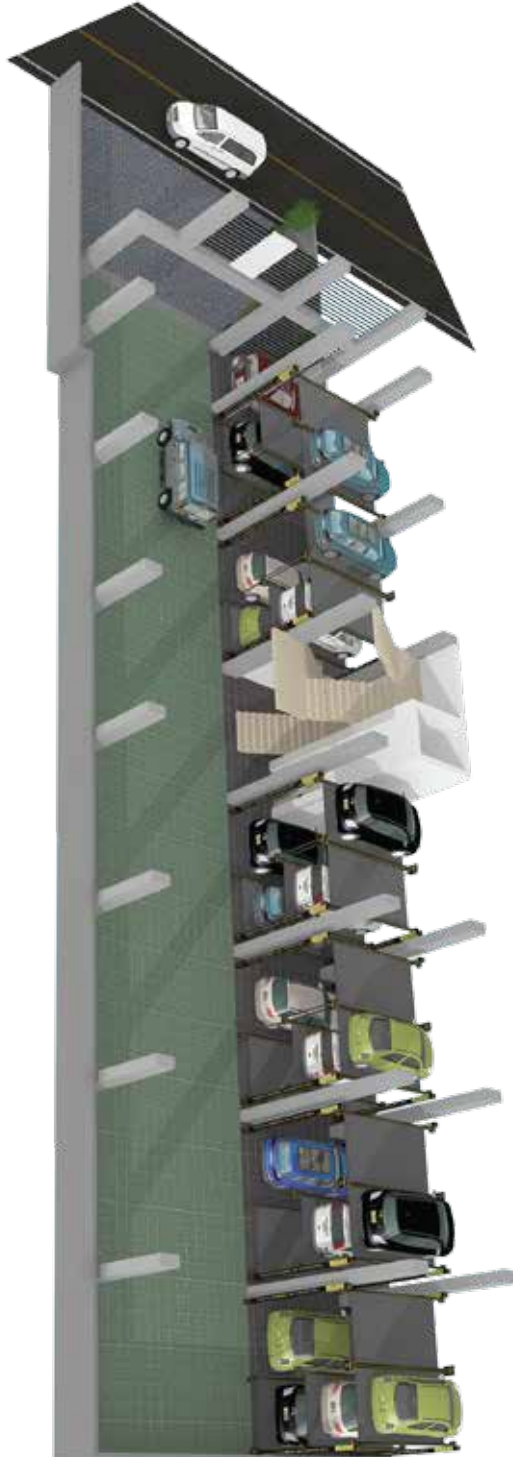


Note : Terms & Conditions apply. This Presentation is not to be construed as a binding offer.





Note : Terms & Conditions apply. This Presentation is not to be construed as a binding offer.



Note : Terms & Conditions apply. This Presentation is not to be construed as a binding offer.



### **SPECIFICATIONS**

The blueprint for Rush Tower details out impeccable quality and refinement that is reflected in ultra-premium specifications and luxury services that come with it

#### **FOUNDATION**

- Raft Foundation or Piling as per the soil test

#### **FLOORING**

- Imported porcelain tiles for rooms and hall
- Imported tiles for bathrooms and pantry
- Imported tiles flooring for staircase & lobby

#### **DOORS & WINDOWS**

- Designed entrance mahogany doors
- Wooden doors for rooms & bathrooms/toilets
- Rust proof powder coated aluminium

#### **KITCHEN**

- Sink with cold water tap
- Mahogany Pantry with granite top
- Provision for washing machine
- Imported tiles for pantry wall

#### **ELECTRICAL WORKS/FIXTURES**

- Individually metered electricity from the national grid
- High quality switches and fixtures with safty panels and high grade trip switch

#### **PLUMBING**

- Imported sanitary fittings
- Hot water geyser provided for bathrooms
- Hand bidet spray
- Single lever concealed shower mixer
- Wash basin + pedestal with mixer tap
- High quality plumbing finishes connected to the main municipal sewer lines/treatment plant

#### **GENERAL SPECIFICATIONS**

- Fully approved free hold property
- Dedicated parking slots for residents
- High speed passenger elevator serving all levels
- 3 Bedrooms
- A/C provided for master bedroom & provision for other two rooms
- Hall & Bedrooms are fitted with ceiling fans and light fittings
- Maids Room & Maids toilet
- Floor to floor height 10.5ft
- TV outlets in hall & master bedroom
- Telephone outlets in hall & master bedroom
- Inter communication system from apartment to security
- Stand by generator backup for common areas lighting, elevator, water pump and fire pumps
- Fire protection system
- Optimal Balance in lighting, ventilation & privacy
- Door to door Garbage collection, eliminating the issue of odor and pests in chutes and garbage storage rooms on the floors
- Fully secured Parapet wall right around
- Lightning conductor
- Maintenance agency to provide professional maintenance services
- Water supply from the main line meterd individually
- Ground storage sump & over head tank in roof top with pressure system
- Roof top garden/ open area for B.B.Q. reception and party facilities
- Close proximity to schools, markets and all religious places
- **Any additions will be charged**

All materials, fittings & equipments are of international standards-reputed makes, with high quality finish all around. Conformity to all statutory & regulatory standards & requirements

Note : Terms & Conditions apply. This Presentation is not to be construed as a binding offer.

## Our Past Successful Project & Future Projects



**RUSH RESIDENCIES**  
15, Campbell Place,  
Dehiwala.  
**Completed project**  
**Deeds issued**



**RUSH EBENEZ**  
No.18, Ebernezer Place,  
Dehiwala.  
**Completed project**  
**Deeds issued**



**RUSH HOMES**  
No.16, Annie Avenue,  
Dehiwala.  
**Completed project**  
**Deeds issued**



**RUSH COURT 2**  
No.27, Vihara Mawatha,  
Kolonnawa.  
**On going project**



**Rush Reliance**  
No.11, Templers Avenue,  
Templers Road, Mt.lavinia.  
**On going project**



*At the pinnacle of your expectations*

# Rush Lanka Group

Head Office : 752, Prince of Wales Avenue, Colombo 14.

☎ 0112 446924 🖨 0112 438521 ✉ [rush@rushlankagroup.com](mailto:rush@rushlankagroup.com)