



RUSH TOWER II

No. 39/9, Nikape Mawatha, Dehiwala.

RUSH TOWER II

Developer
**RUSH LANKA
GROUP**

Architect
Mr. AJANTHA DIAS
(Architectural Licentiate)

Structural Engineer
Mr. LAKSIRI COORAY
Bsc. ENG, (C.ENG), MIE(SL), AMI Structure



This 3D image is not to be construed as a final product. However, interior design such as this is possible for the apartments.

HOMES THAT SPEAK THE GOOD LIFE



08 / **36**
Floors / Units



This 3D image is not to be construed as a final product. However, interior design such as this is possible for the apartments.



This 3D image is not to be considered as a final product. However, interior design such as this is possible for the apartments.



LIVING ROOM

www.rushlankagroup.com

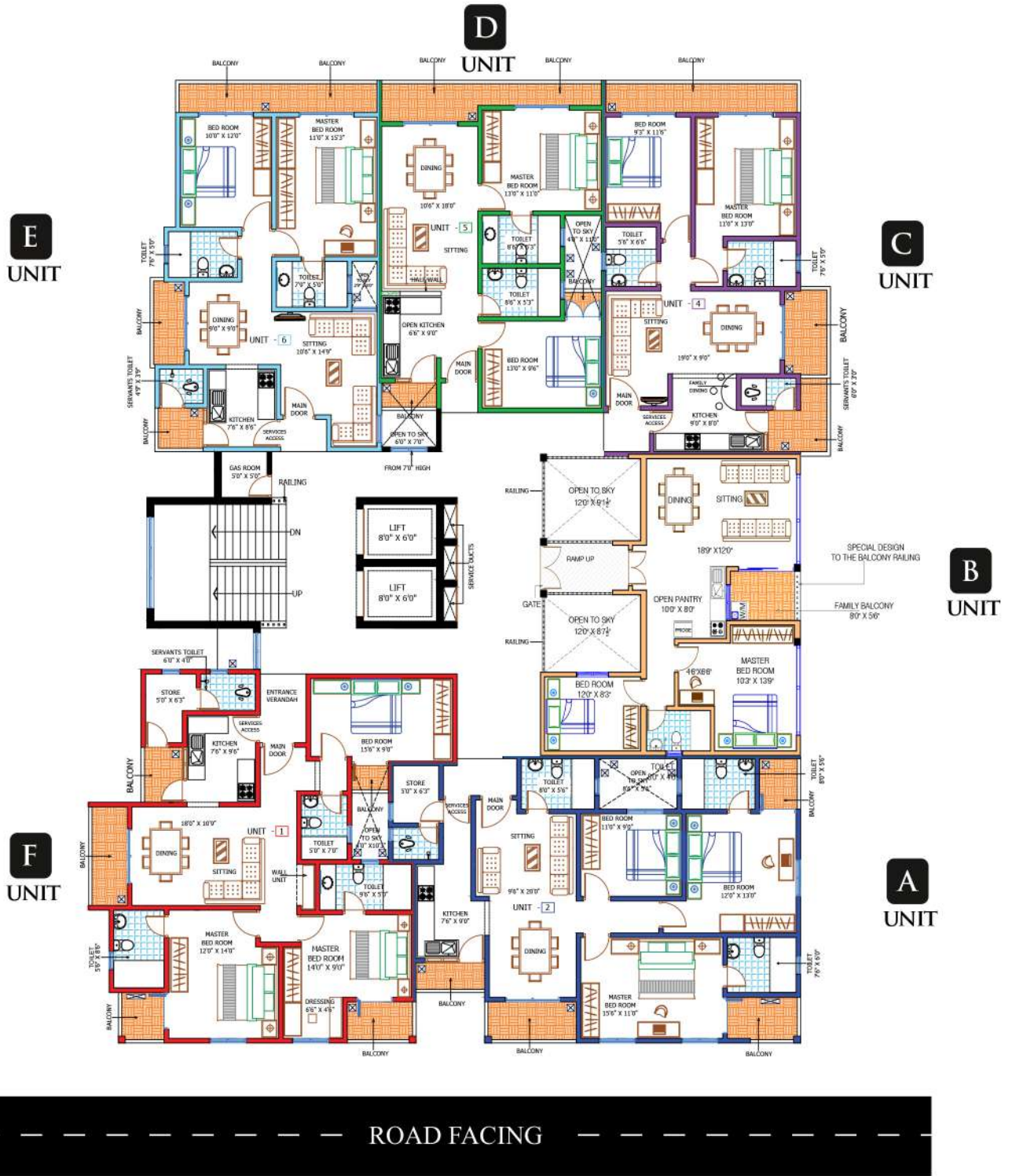


This 3D image is not to be construed as a final product. However, interior design such as this is possible for the apartments.

MASTER BEDROOM

www.rushlankagroup.com

TYPICAL FLOOR PLAN



This 3D image is not to be construed as a final product. However, interior design such as this is possible for the apartments.

This 3D image is not to be construed as a final product. How ever, it is a good representation of the final product.



KITCHEN
www.rushlankagroup.com



This 3D image is not to be construed as a final product. However, interior design such as this is possible for the apartments.

BATHROOM

www.rushlankagroup.com

D	C
E	B
F	A

A- UNIT
3D VIEW

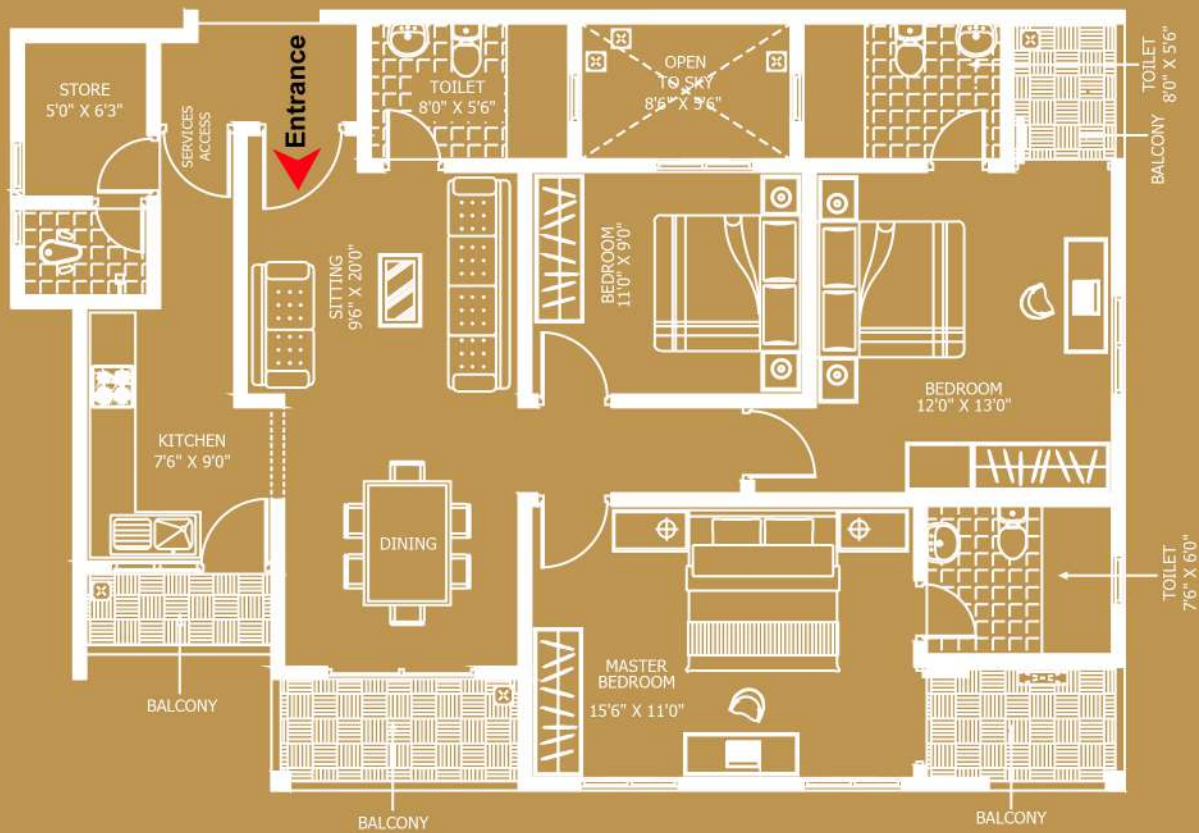


ROAD FACING

This 3D image is not to be construed as a final product. However, interior design such as this is possible for the apartments.

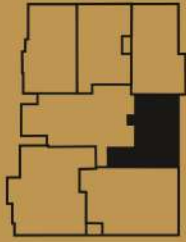


A- UNIT 1250 Sq.ft

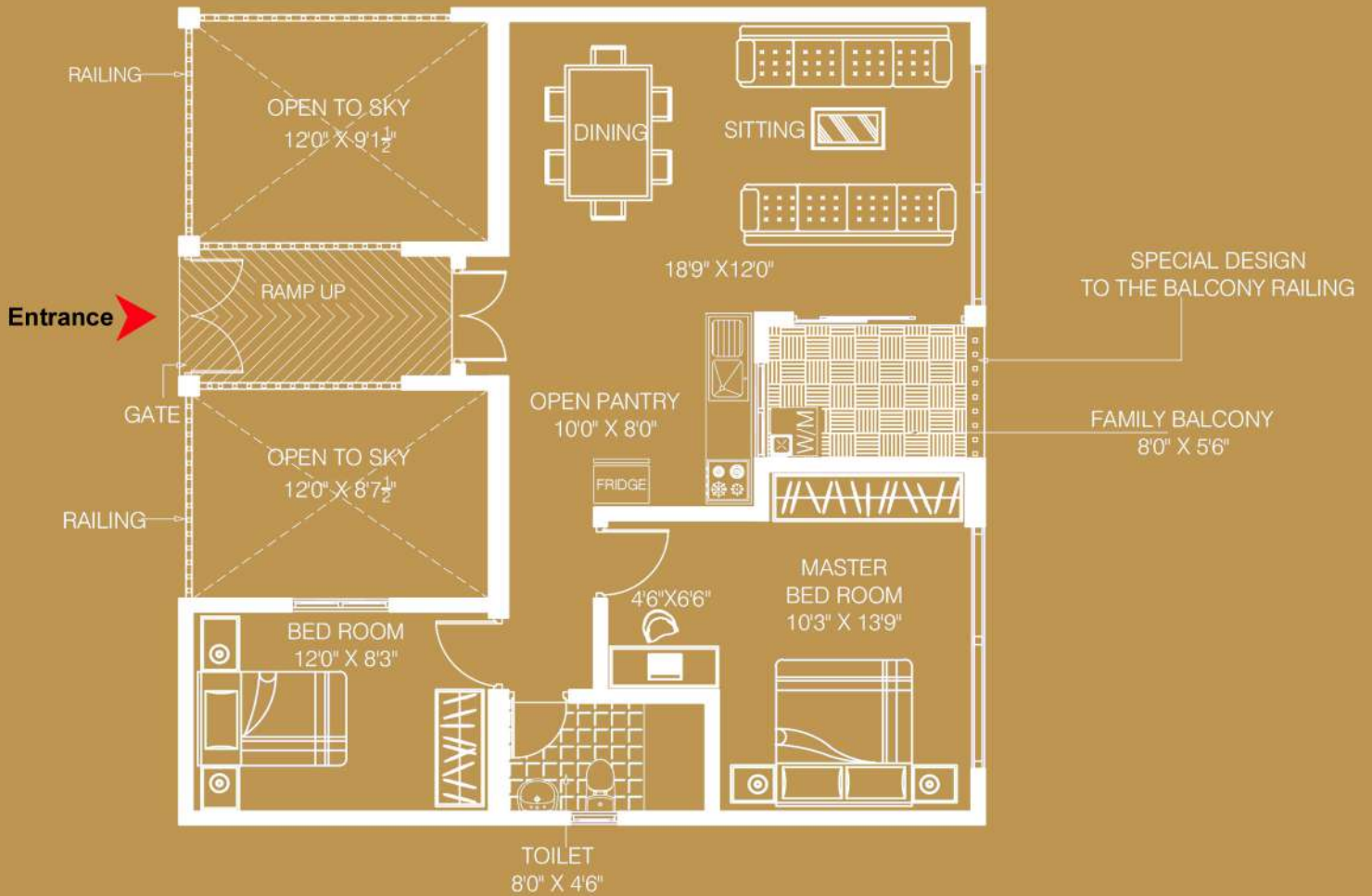


ROAD FACING

This presentation contains purely conceptual illustrations of the end product, which may vary in design, style, colour, material or layout from the depictions contained herein. Stated floor areas are approximate measurements only, subject to final survey. The Developer reserves the right to modify any part or parts of the building prior to completion. Nothing herein contained nor anything omitted here from may be construed as being material representation resulting in a legal liability to the Developer in any manner whatsoever. The depictions of furnishings are for reference only.



B- UNIT 780 Sq.ft



This presentation contains purely conceptual illustrations of the end product, which may vary in design, style, colour, material or layout from the depictions contained herein. Stated floor areas are approximate measurements only, subject to final survey. The Developer reserves the right to modify any part or parts of the building prior to completion. Nothing herein contained nor anything omitted here from may be construed as being material representation resulting in a legal liability to the Developer in any manner whatsoever. The depictions of furnishings are for reference only.



This 3D image is not to be construed as a final product. We reserve the right to design and construct the actual product as we see fit for the apartments.

EXERCISE
DON'T
FORGET
CALORIES

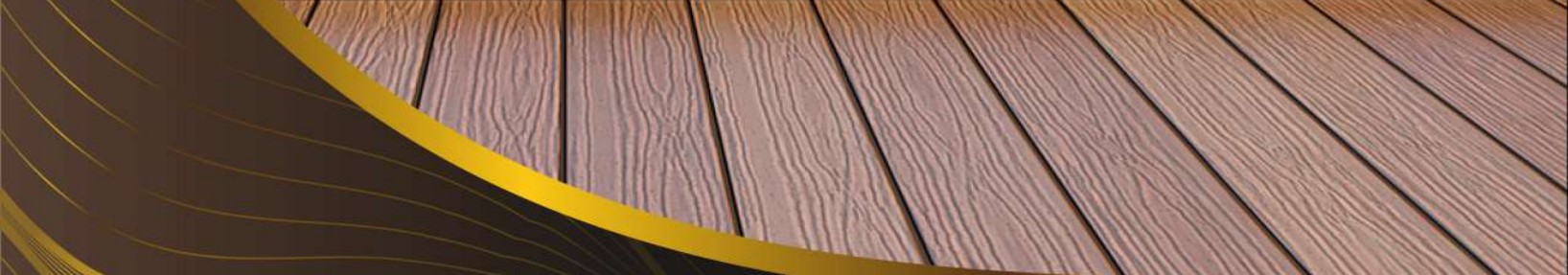
EXERCISE
DON'T
FORGET
CALORIES

GYM

www.rushlankagroup.com



This 3D image is not to be construed as a final product. However, interior design is as the is possible for this image.



SWIMMING POOL

www.rushlankagroup.com



C- UNIT

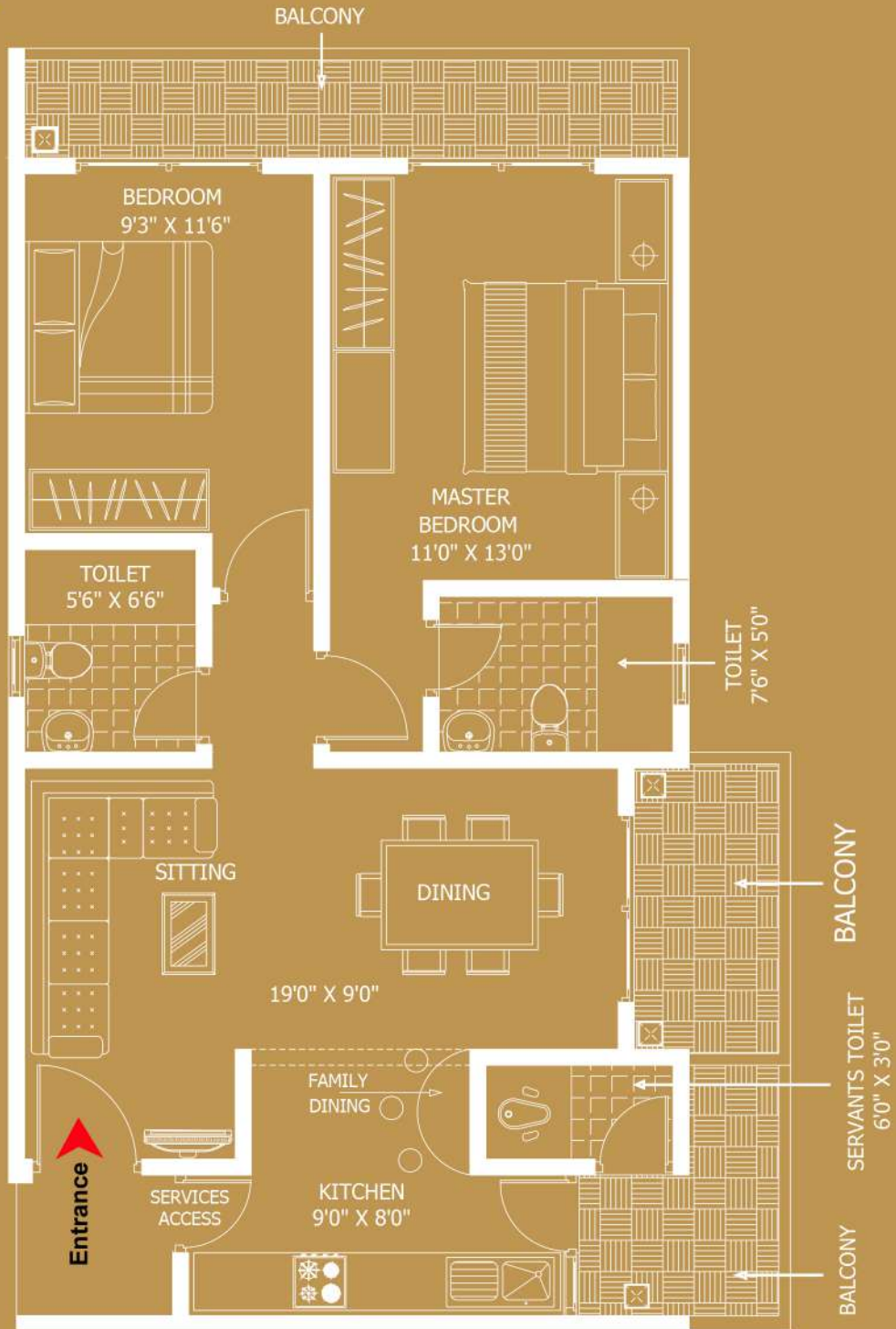
3D VIEW



This 3D image is not to be construed as a final product. However, interior design such as this is possible for the apartments.



C- UNIT 935 Sq.ft

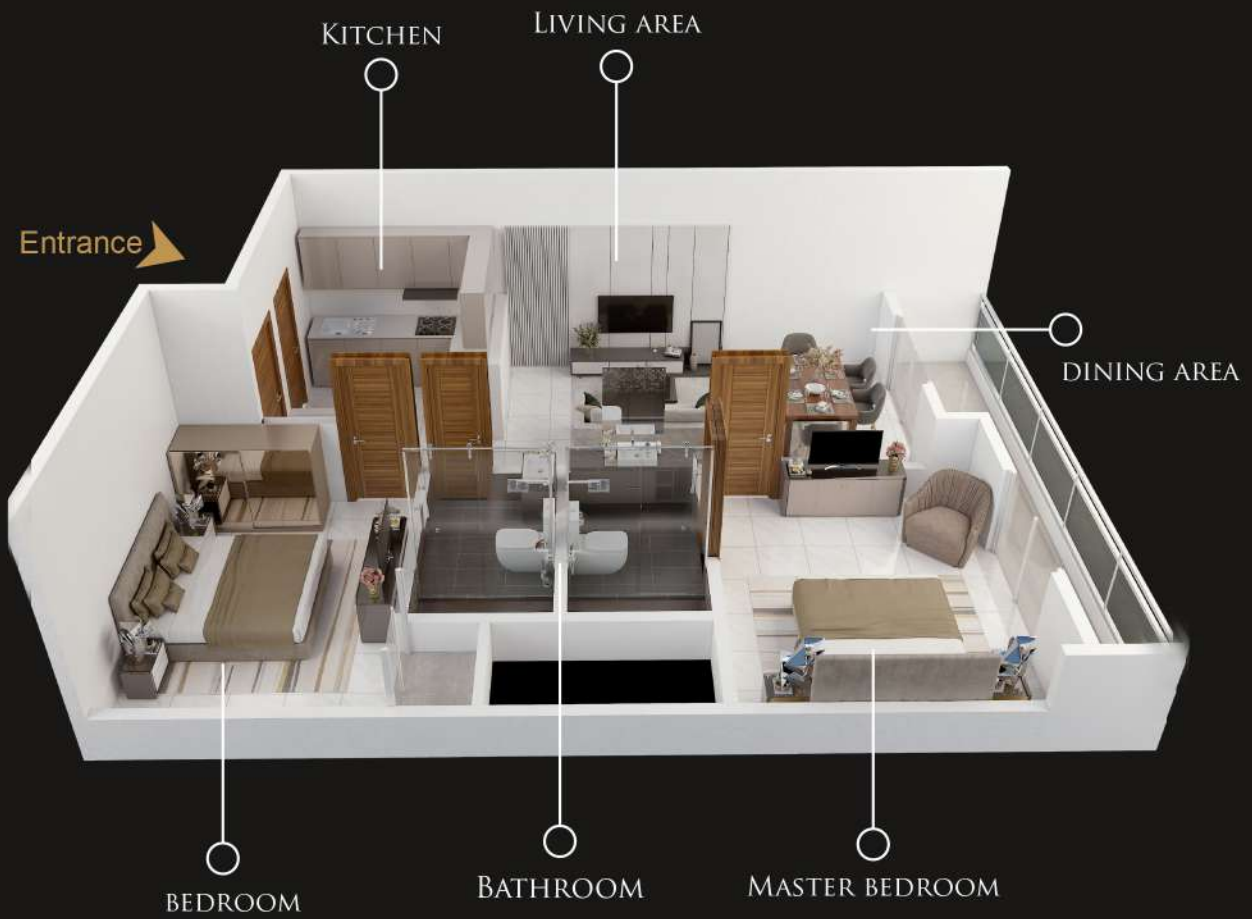


This presentation contains purely conceptual illustrations of the end product, which may vary in design, style, colour, material or layout from the depictions contained herein. Stated floor areas are approximate measurements only, subject to final survey. The Developer reserves the right to modify any part or parts of the building prior to completion. Nothing herein contained nor anything omitted here from may be construed as being material representation resulting in a legal liability to the Developer in any manner whatsoever. The depictions of furnishings are for reference only.



D- UNIT

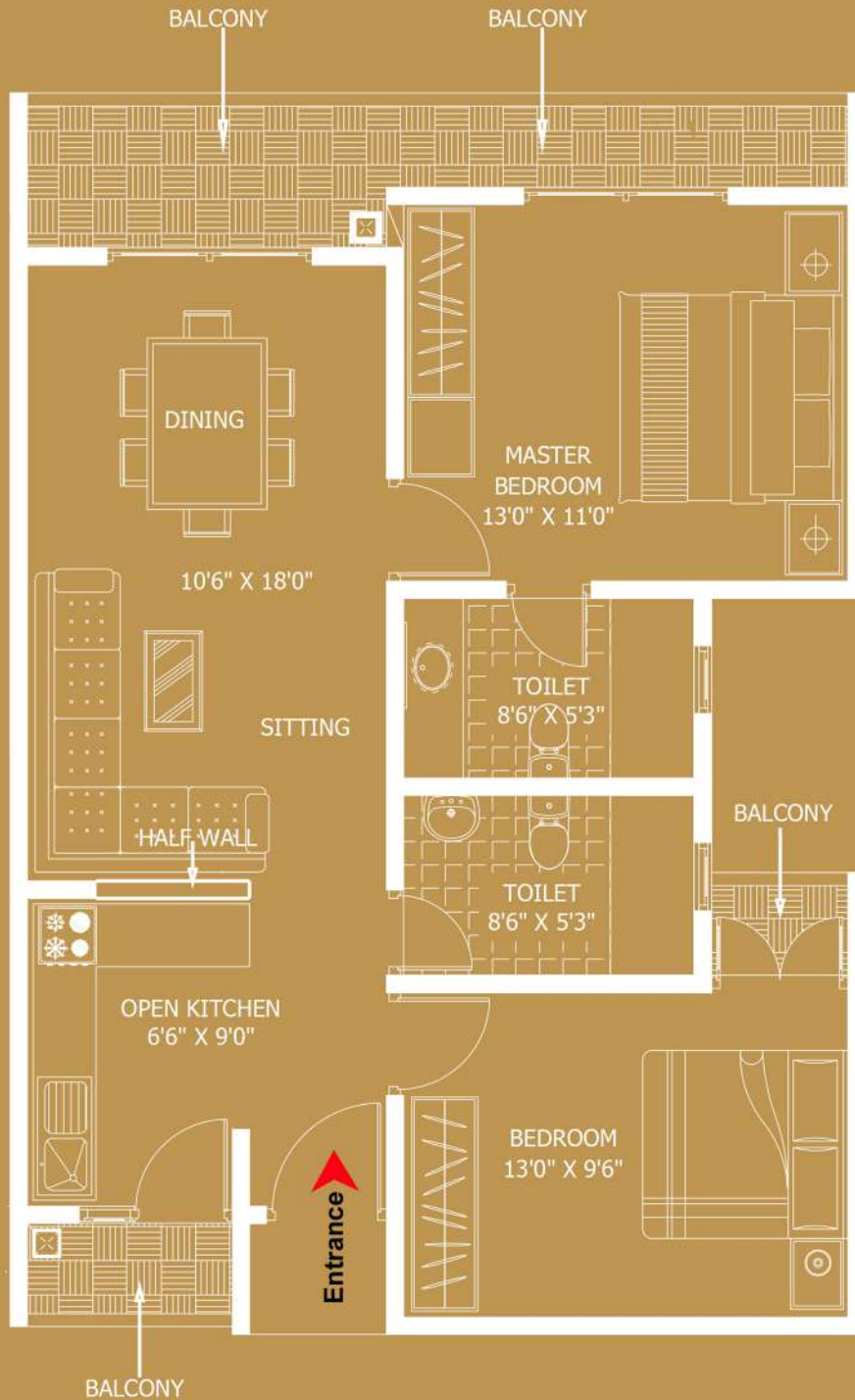
3D VIEW



This 3D image is not to be construed as a final product. However, interior design such as this is possible for the apartments.



D-UNIT 850 Sq.ft



This presentation contains purely conceptual illustrations of the end product, which may vary in design, style, colour, material or layout from the depictions contained herein. Stated floor areas are approximate measurements only, subject to final survey. The Developer reserves the right to modify any part or parts of the building prior to completion. Nothing herein contained nor anything omitted here from may be construed as being material representation resulting in a legal liability to the Developer in any manner whatsoever. The depictions of furnishings are for reference only.

This 3D image is not to be construed as a final product. However, it is as close as possible to the final product.



CAR PARK
www.rushlankagroup.com



This 3D image is not to be construed as a final product. However, interior design such as this is possible for the apartment.

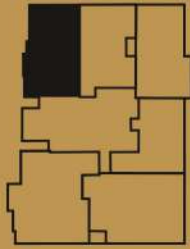
ROOF TOP
www.rushlankagroup.com



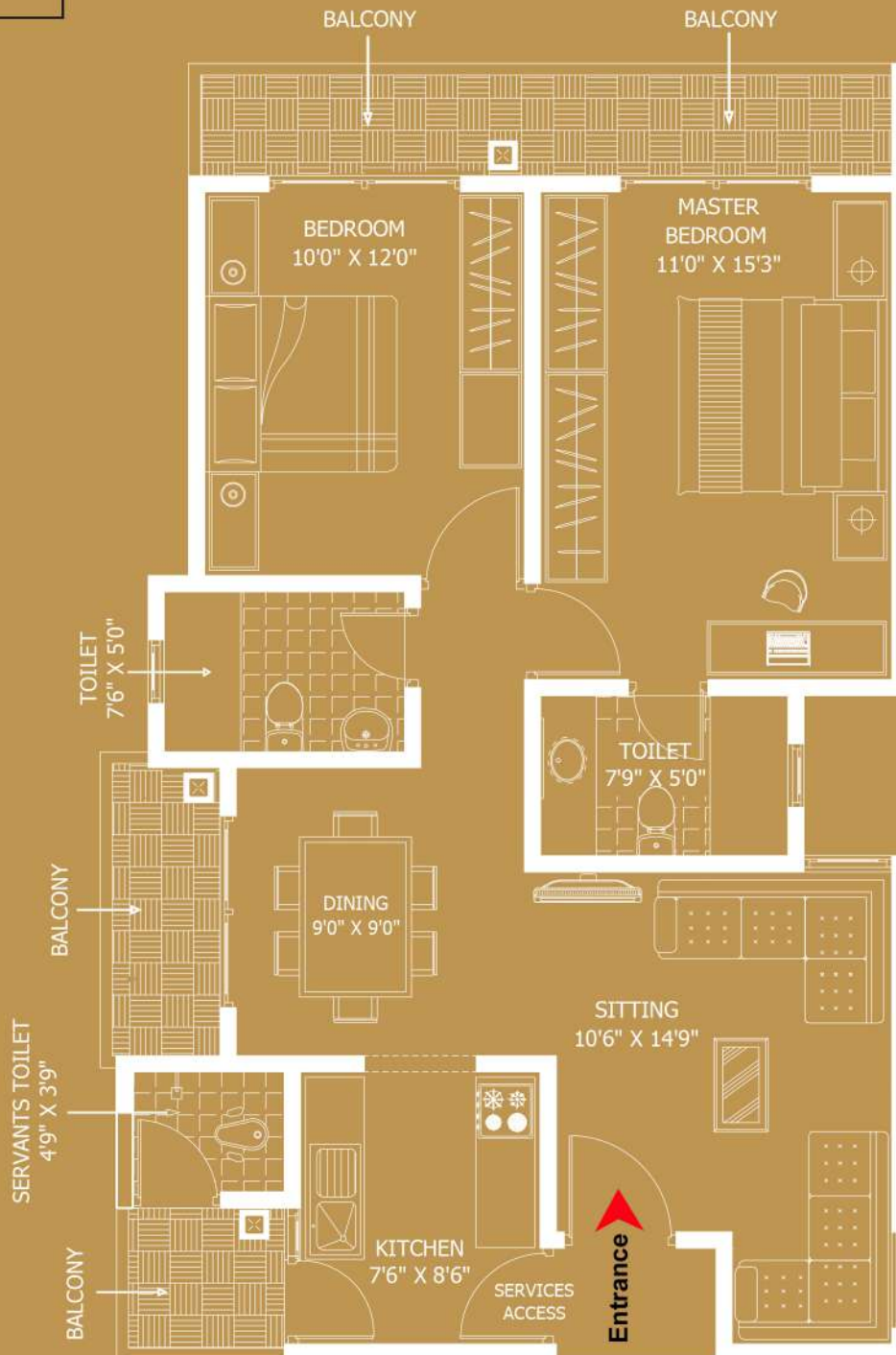
E- UNIT 3D VIEW



This 3D image is not to be construed as a final product. However, interior design such as this is possible for the apartments.



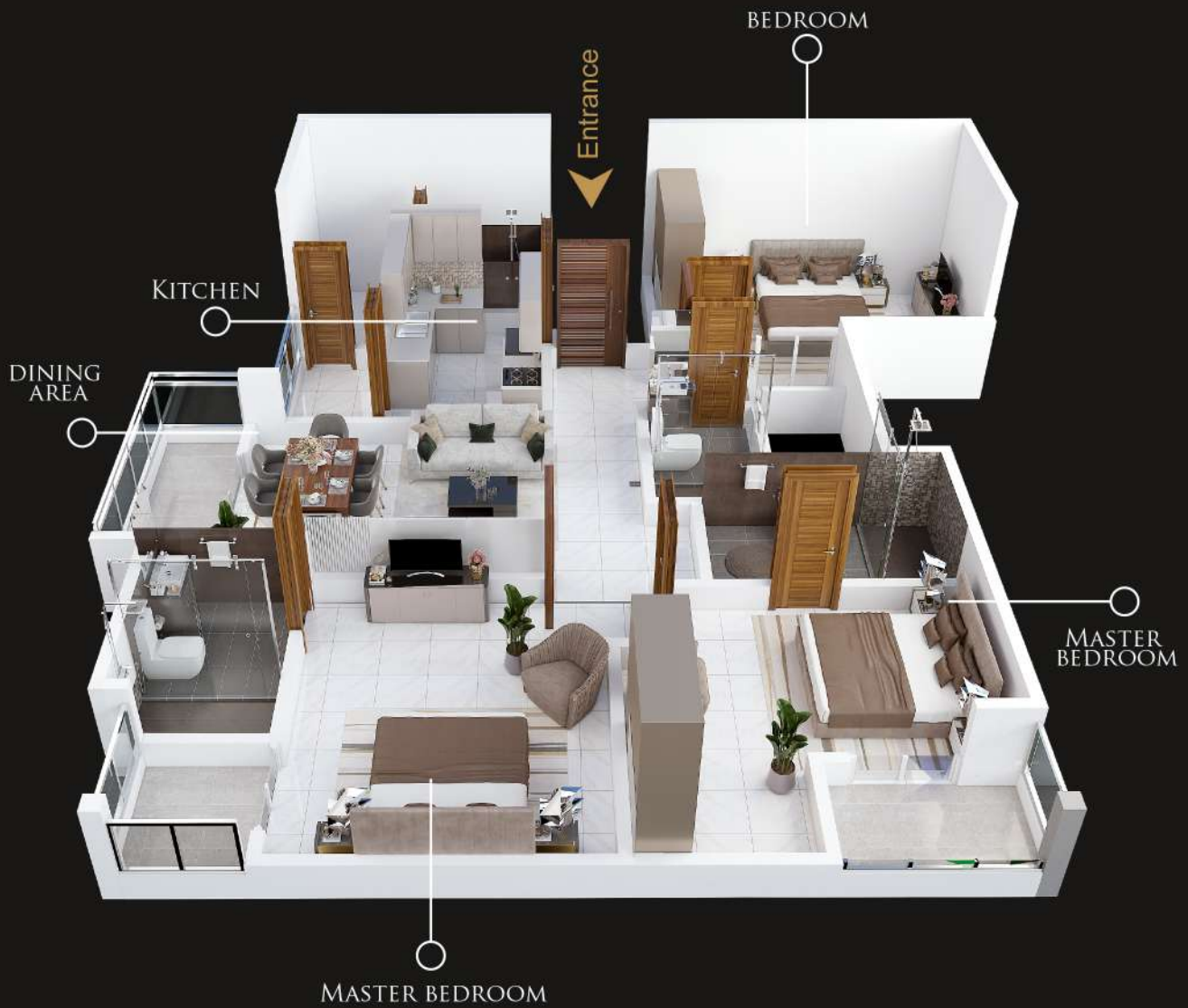
E- UNIT 940 Sq.ft



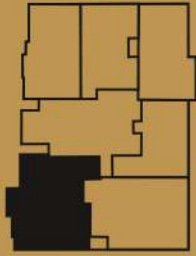
This presentation contains purely conceptual illustrations of the end product, which may vary in design, style, colour, material or layout from the depictions contained herein. Stated floor areas are approximate measurements only, subject to final survey. The Developer reserves the right to modify any part or parts of the building prior to completion. Nothing herein contained nor anything omitted here from may be construed as being material representation resulting in a legal liability to the Developer in any manner whatsoever. The depictions of furnishings are for reference only.

D	C
E	B
F	A

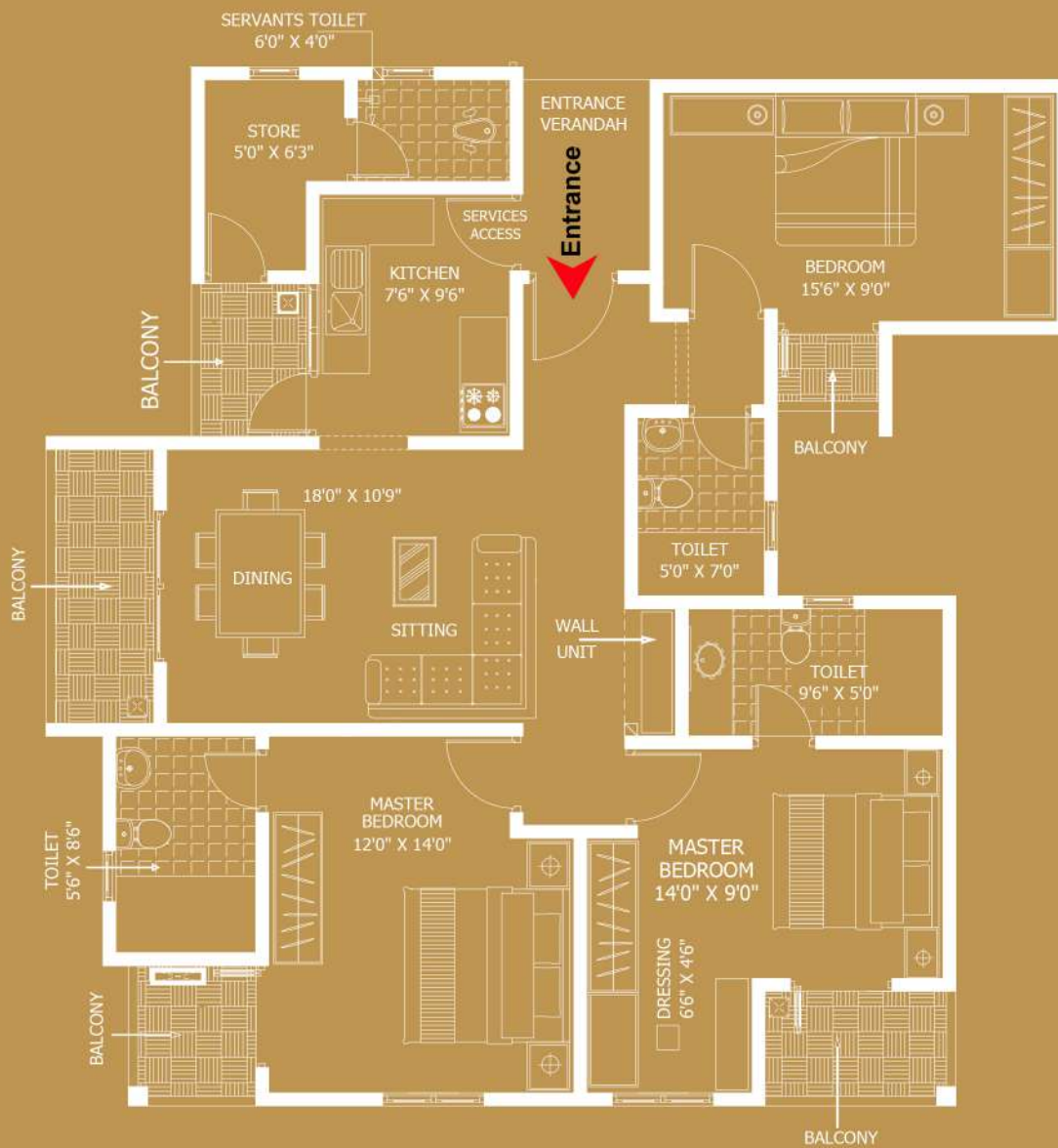
F- UNIT
3D VIEW



This 3D image is not to be construed as a final product. However, interior design such as this is possible for the apartments.

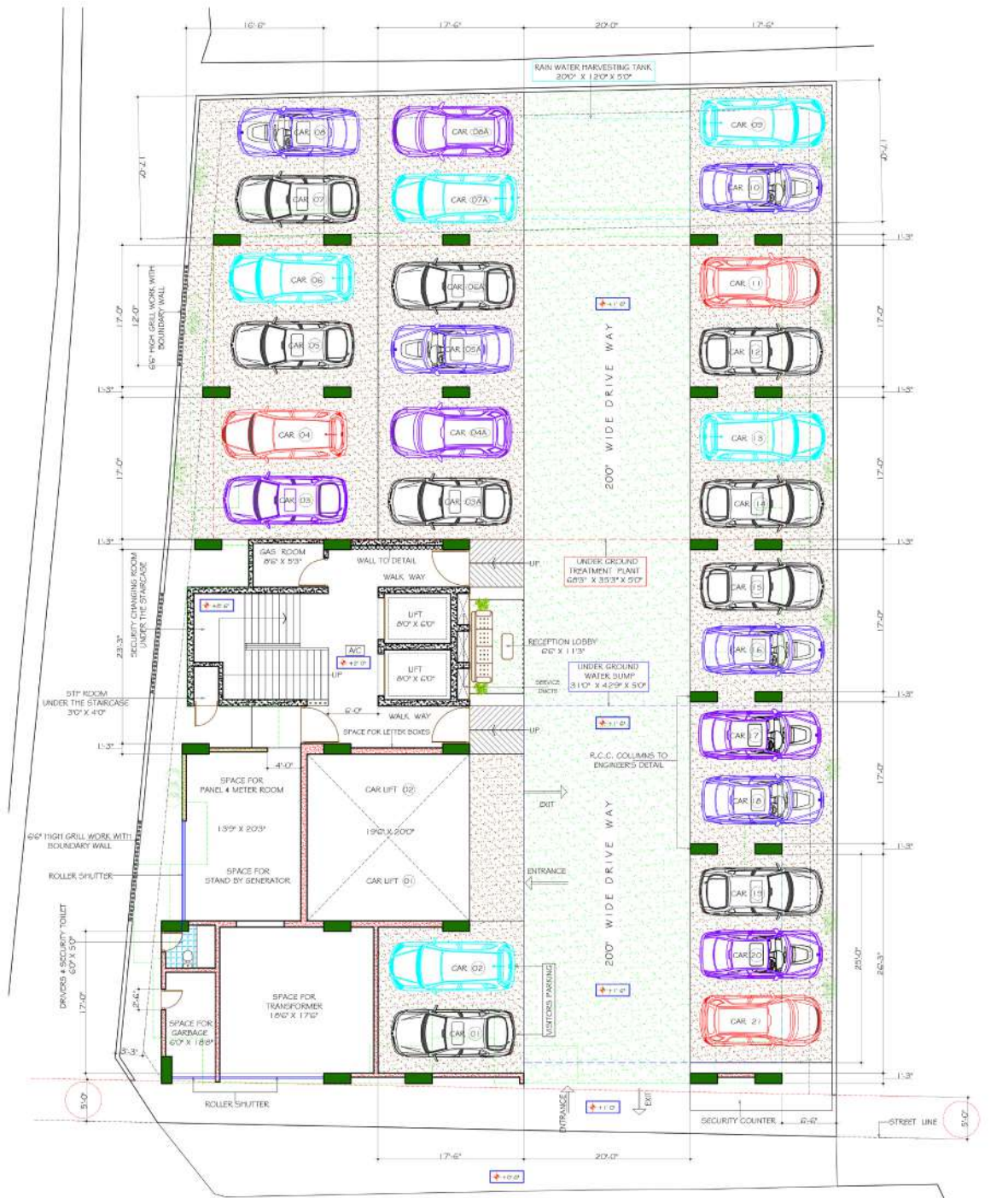


F- UNIT 1305 Sq.ft



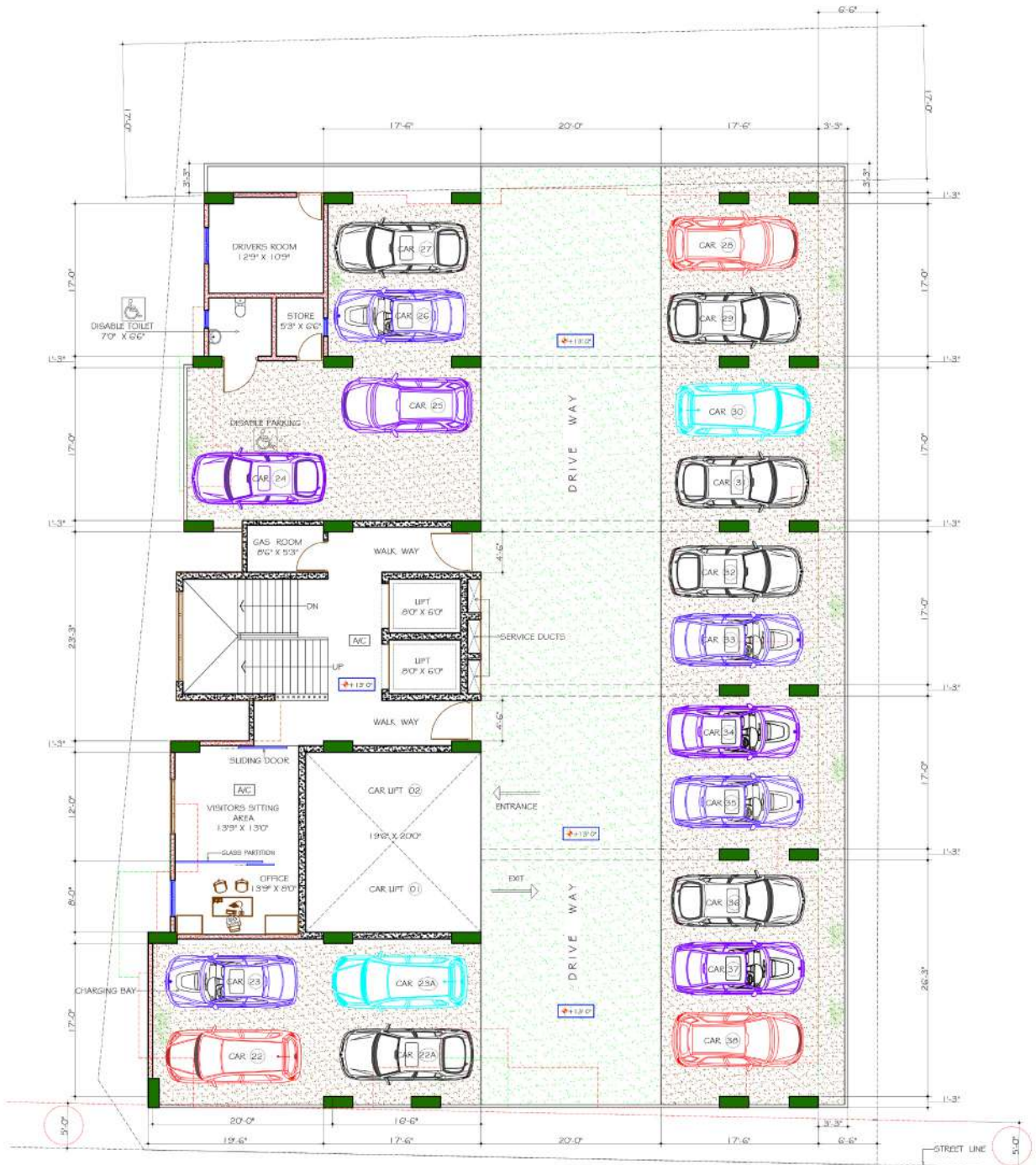
This presentation contains purely conceptual illustrations of the end product, which may vary in design, style, colour, material or layout from the depictions contained herein. Stated floor areas are approximate measurements only, subject to final survey. The Developer reserves the right to modify any part or parts of the building prior to completion. Nothing herein contained nor anything omitted here from may be construed as being material representation resulting in a legal liability to the Developer in any manner whatsoever. The depictions of furnishings are for reference only.

GROUND FLOOR



This presentation contains purely conceptual illustrations of the end product, which may vary in design, style, colour, material or layout from the depictions contained herein. Stated floor areas are approximate measurements only, subject to final survey. The Developer reserves the right to modify any part or parts of the building prior to completion. Nothing herein contained nor anything omitted here from may be construed as being material representation resulting in a legal liability to the Developer in any manner whatsoever. The depictions of furnishings are for reference only.

FIRST FLOOR



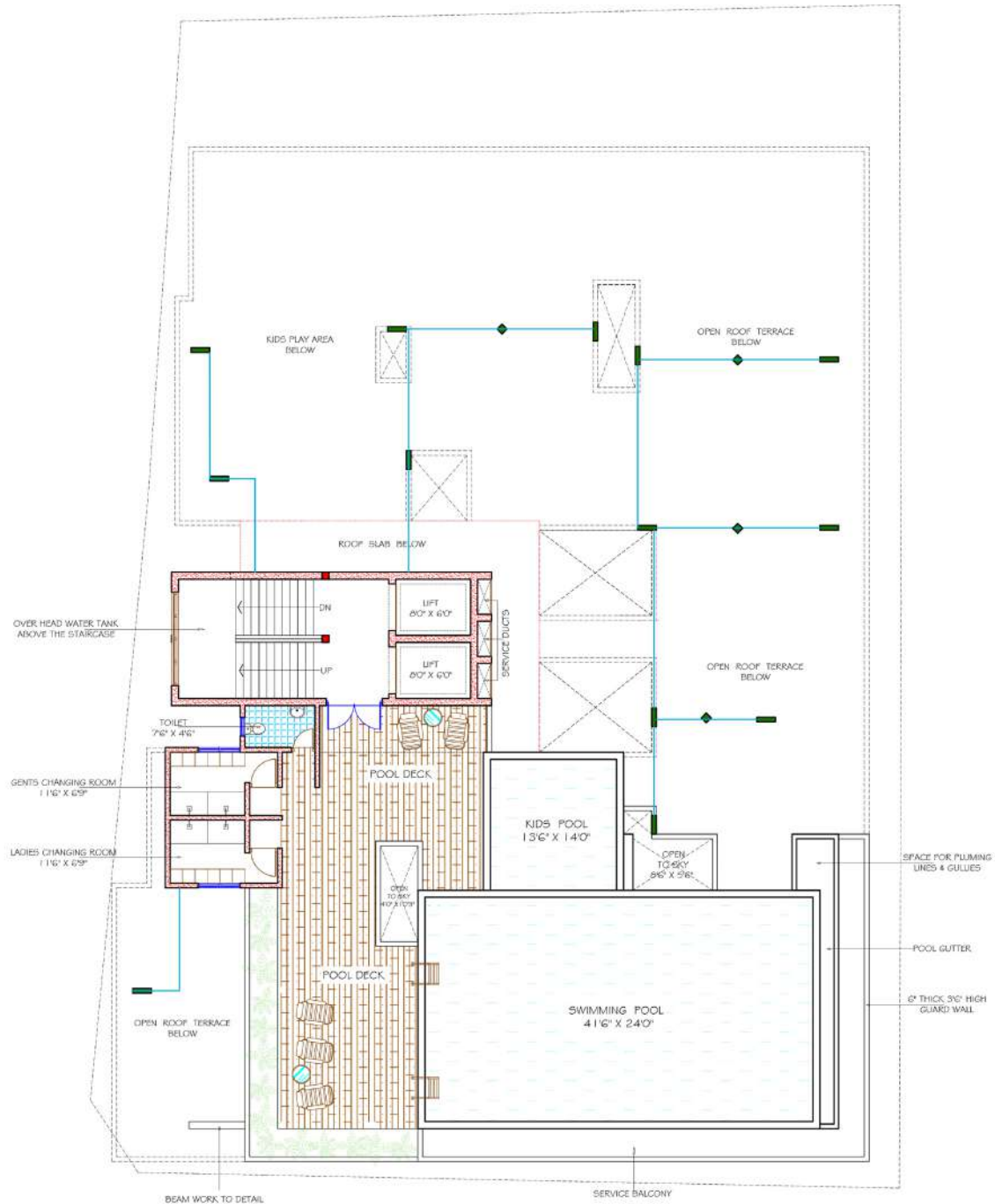
This presentation contains purely conceptual illustrations of the end product, which may vary in design, style, colour, material or layout from the depictions contained herein. Stated floor areas are approximate measurements only, subject to final survey. The Developer reserves the right to modify any part or parts of the building prior to completion. Nothing herein contained nor anything omitted here from may be construed as being material representation resulting in a legal liability to the Developer in any manner whatsoever. The depictions of furnishings are for reference only.

ROOF TOP



This presentation contains purely conceptual illustrations of the end product, which may vary in design, style, colour, material or layout from the depictions contained herein. Stated floor areas are approximate measurements only, subject to final survey. The Developer reserves the right to modify any part or parts of the building prior to completion. Nothing herein contained nor anything omitted here from may be construed as being material representation resulting in a legal liability to the Developer in any manner whatsoever. The depictions of furnishings are for reference only.

SWIMMING POOL



This presentation contains purely conceptual illustrations of the end product, which may vary in design, style, colour, material or layout from the depictions contained herein. Stated floor areas are approximate measurements only, subject to final survey. The Developer reserves the right to modify any part or parts of the building prior to completion. Nothing herein contained nor anything omitted here from may be construed as being material representation resulting in a legal liability to the Developer in any manner whatsoever. The depictions of furnishings are for reference only.

SPECIFICATIONS

FOUNDATION

- Raft foundation/ Piling as per the engineers specifications.

FLOORING

- Imported Porcelain tiles for hall
- Imported tiles for bathroom's wall
- Imported tiles for staircase & lobby
- Artificial wooden flooring for bedrooms

ELECTRICAL WORKS/ FIXTURES

- Individually metered electricity from the national grid
- High quality switches and fixtures with safety panels and high grade trip switch

PLUMBING

- Imported sanitary fittings
- Hot water geyser provided for master and common bathrooms
- Hand bidet spray
- Shower mixer
- Wash basin with mixer tap
- High quality plumbing finishes connected to the main municipal sewer lines/ treatment plant

GENERAL SPECIFICATIONS

- Fully approved free hold property
- Dedicated parking slots for residents
- Two High speed passenger elevator serving all levels
- Studio 2/3 bedrooms
- A/C provided for master bedroom & provision for other rooms
- Hall & bedrooms are fitted with ceiling fans and light fittings
- Maid's room & maid's toilet
- Floor to floor height 11ft
- TV outlets in hall & master bedroom
- Telephone outlets in hall & master bedroom
- Inter communication system from apartment to security
- Stand by generator backup for common areas lighting, elevator, water pump, fire pumps and apartments (limited points)
- Fire protection system
- Optimal balance in lighting, ventilation & privacy
- Door to door garbage collection, eliminating the issue of odor and Pests in chutes and garbage storage rooms on the floors
- Fully secured parapet wall right around
- Lightning conductor with surge protection
- Water supply for the main line metered individually
- Ground storage sump & overhead tank in roof top with pressure system
- Roof top garden/open area for B.B.Q reception and party facilities, Kids play area, outdoor play area with net covering
- Fully equipped gymnasium
- Swimming pool and Kids pool
- Close proximity to schools, Markets and all religious place

Any additions will be charged

All materials, fittings & equipments are of international standards-reputed makes, with high quality finish all around. Conformity to all statutory & regulatory standards & requirements.

KITCHEN

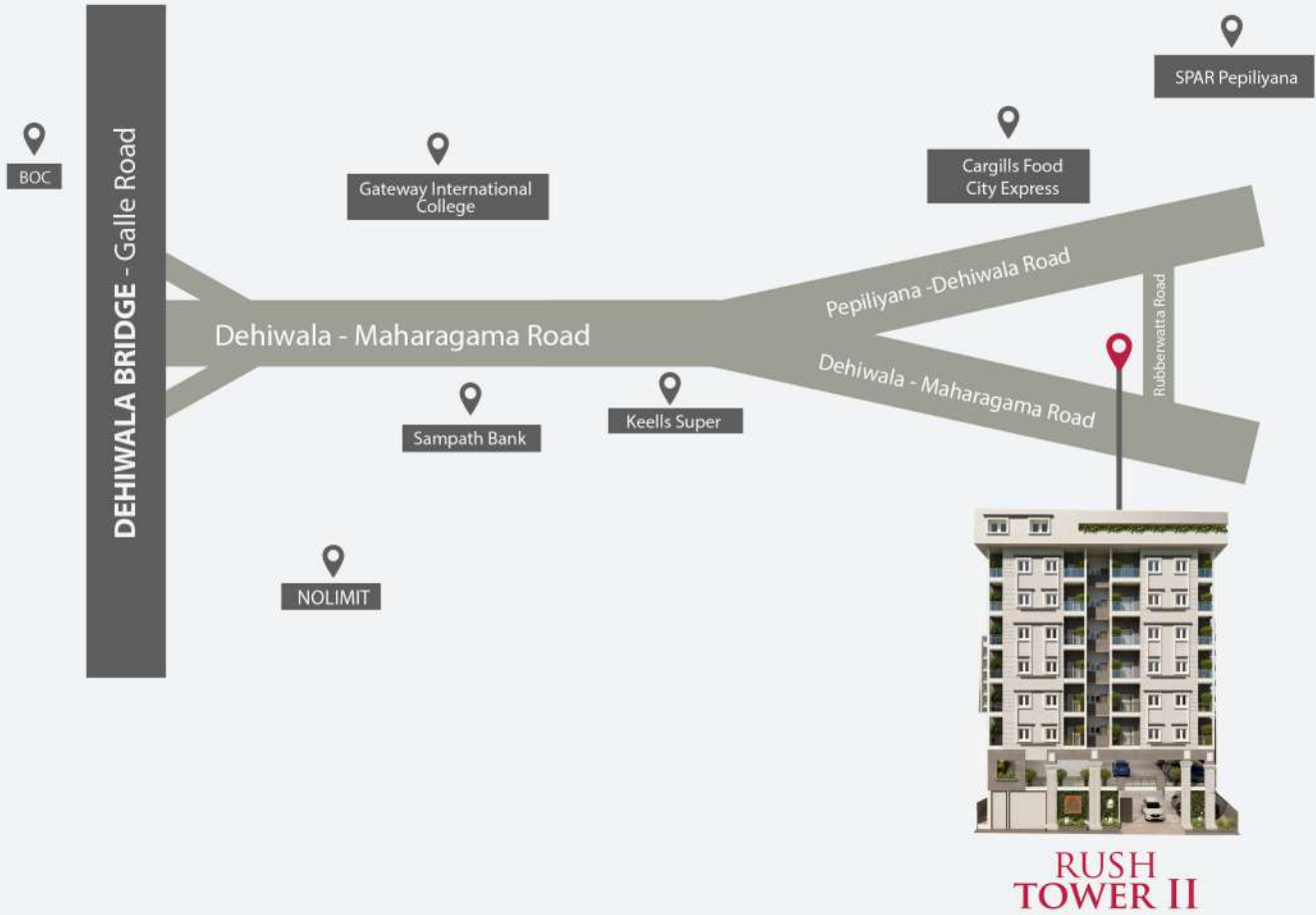
- Sink with cold water tap
- Wooden pantry with Cooker hood & hob
- Provision for washing machine
- Imported tiles for pantry wall

DOORS & WINDOWS

- Designed entrance engineered wooden doors
- Engineered wooden doors for rooms
- Rust proof powder coated aluminium for windows and bathrooms

LOCATION MAP

No. 39/9, Nikape Mawatha, Dehiwala.



CONVENIENCE

WITHIN 1 - 3 KM



Gateway International College
S. Thomas' College
Day Bridge International school



Bellanvilla Jogging Track



Dehiwala Zoo



Dehiwala Junction - **2Km**
High level Road (Nugegoda) - **3.4 Km**



Keells
SPAR - Pepiliyana
Cargills Food City



Kelimadala Children Park



Kalubowila Hospital
Vasana Hospital



Sampath Bank
Bank of Ceylon



RUSH LANKA GROUP
(+94) 77 770 7874

HEAD OFFICE

No. 31, Melbourne Avenue,
Colombo 04.

WEB

www.rushlankagroup.com

EMAIL

sales@rushlankagroup.com

TELEPHONE

011 2 583 012

FAX

011 2 583 002

This presentation contains purely conceptual illustrations of the end product, which may vary in design, style, colour, material or layout from the depictions contained herein. Stated floor areas are approximate measurements only, subject to final survey. The Developer reserves the right to modify any part or parts of the building prior to completion. Nothing herein contained nor anything omitted here from may be construed as being material representation resulting in a legal liability to the Developer in any manner whatsoever. The depictions of furnishings are for reference only.