

Rutsh
RESIDENCIES
KAWDANA

**LUXURIOUS
SPLENDOUR
FOR HOME OR
INVESTMENT**



A modern kitchen interior with dark cabinetry, a large window, and a countertop with various items. The image is overlaid with a blue tint and a red diagonal stripe in the top-left and bottom-right corners.

HOMES THAT SPEAK THE GOOD LIFE

Rush Residencies Kawdana is the home that you've always wanted. A home without compromises set in the heart of Kawdana. A home for people who have lived, worked or travelled across the globe and experienced the best.

Designed to international standards and specifications by the Rush Housing Private Limited, Rush Residencies is architecturally nuanced to take advantage of its location. It's a virtual ocean of peace and tranquillity - amidst the hustle and bustle of one of Kawdana's emerging hubs.

Rush Residencies follows a contemporary architectural style that promises to transform the Kawdana skyline. It translates into a unique blend of space, views, aesthetics, and design.



COMING HOME TO
PURE LIVING

A modern kitchen with white upper cabinets and wood-grain lower cabinets. The countertop is white and features a sink with a chrome faucet, a cooktop, and a gas stove. A red diagonal line is drawn across the bottom right corner of the image.

LIVE TODAY IN THE HOME
THAT'S MAKING NEWS





Project managed and
Constructed by:

RUSH HOUSING PRIVATE LIMITED

LOCATION :

SALES OFFICE :

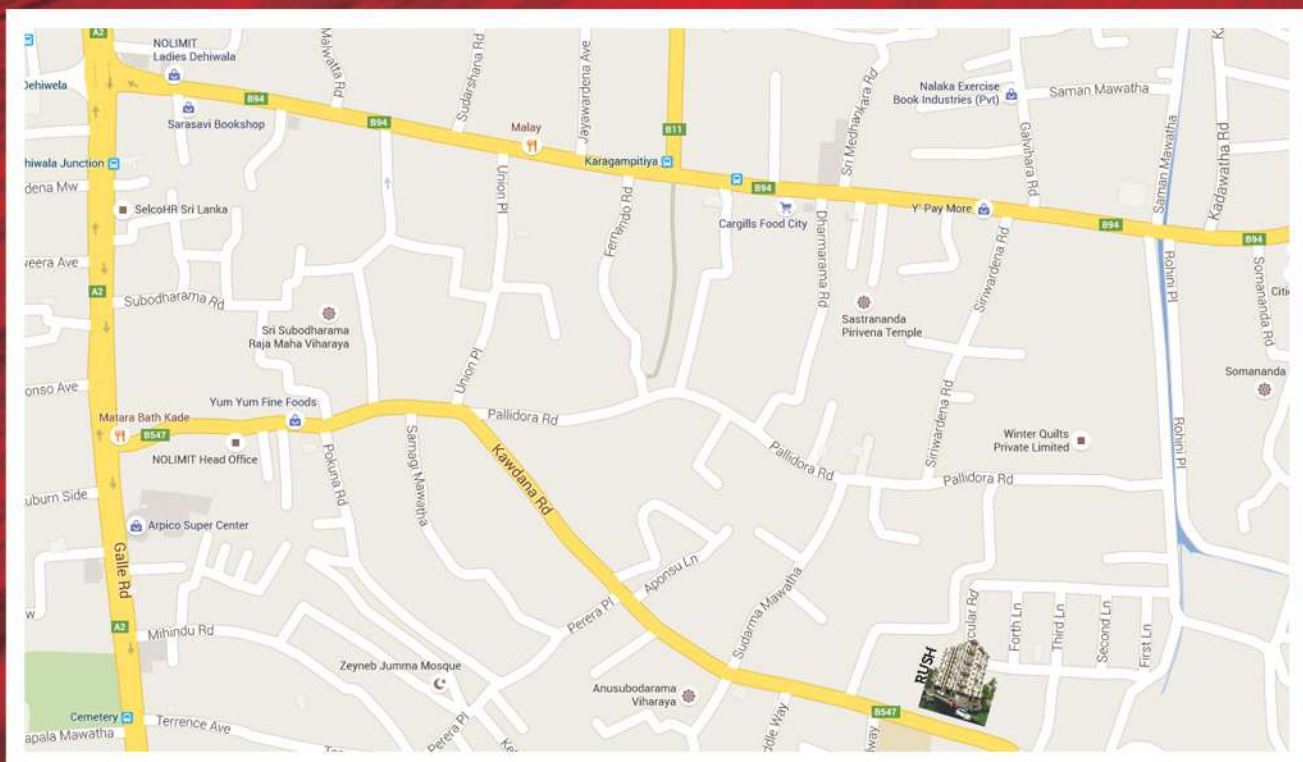
147, KAWDANA ROAD,
DEHIWALA.

STRUCTURAL ENGINEER :

LAKSIRI COORAY BSC.ENG, (C.ENG), MIE (SL), AMI STRUCTURE

DESIGNED BY :

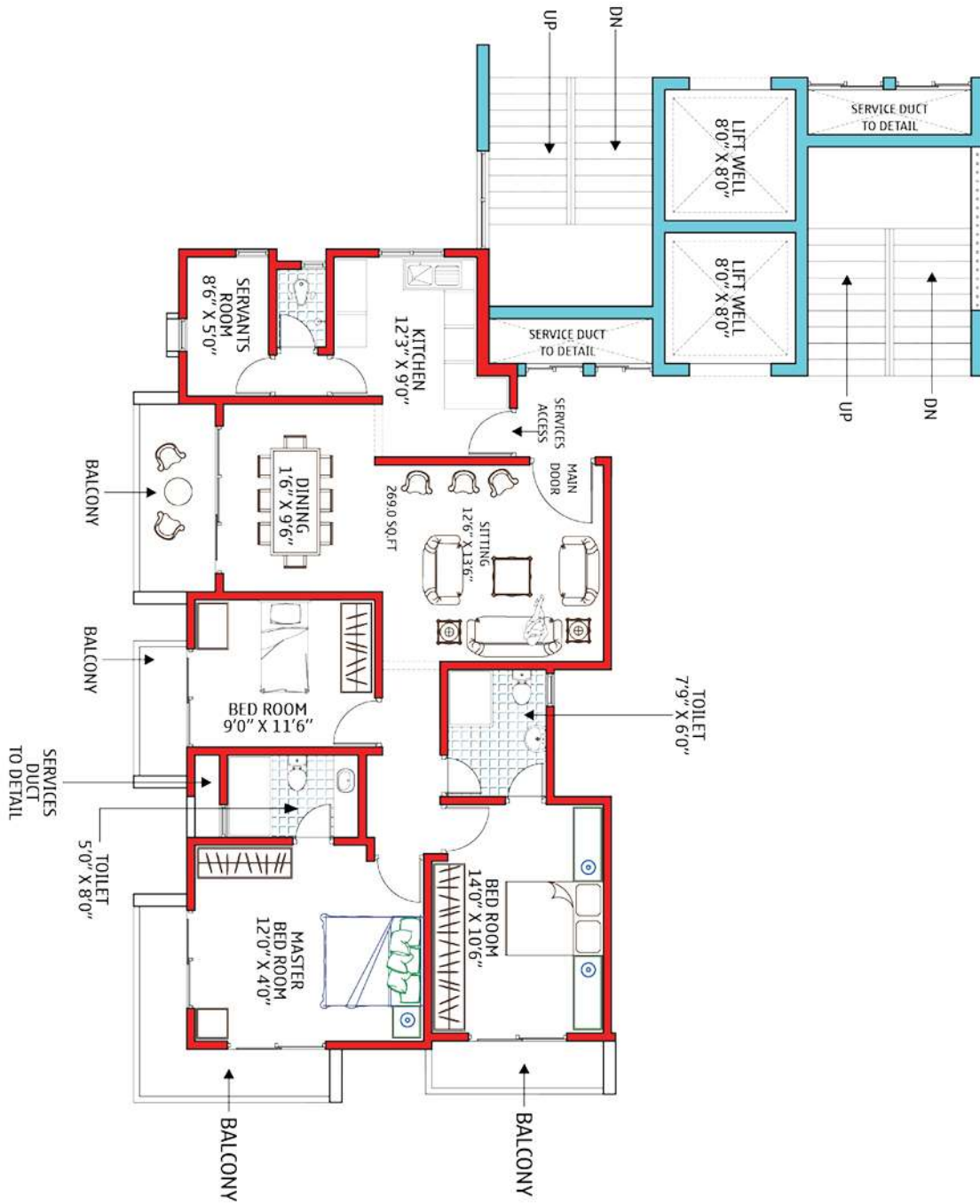
AJANTHA DIAS (ARCHITECTURAL LICENTIATE)





AESTHETICALLY DESIGNED
HOMES THAT SUITES FOR
OPULENCE LIVING

- 3 BEDROOMS
- A/C FOR MASTER BEDROOM
- A/C PROVISION FOR OTHER BEDROOMS
- KITCHEN WITH PANTRY
- 2 ATTACHED TOILETS
- SERVANT ROOM & TOILET



UNIT A 1310 SQ.FT

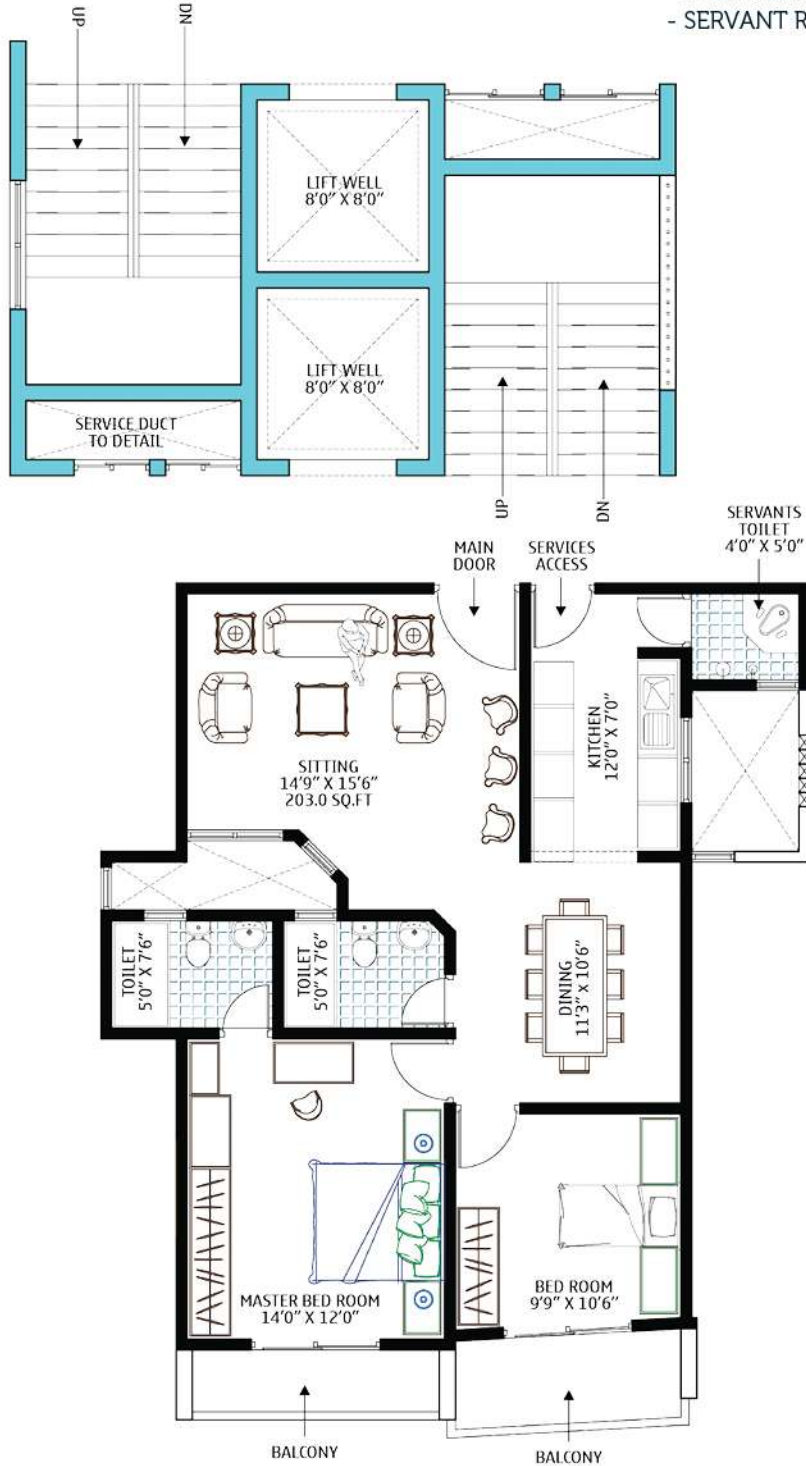
Note : Terms & Conditions apply. This Presentation is not to be construed as a binding offer.



1310 SQ.FT

A

- 2 BEDROOMS
- A/C FOR MASTER BEDROOM
- A/C PROVISION FOR OTHER BEDROOM
- KITCHEN WITH PANTRY
- 1 ATTACHED TOILET
- 1 COMMON TOILET
- SERVANT ROOM & TOILET



UNIT B 945 SQ.FT

Note : Terms & Conditions apply. This Presentation is not to be construed as a binding offer.

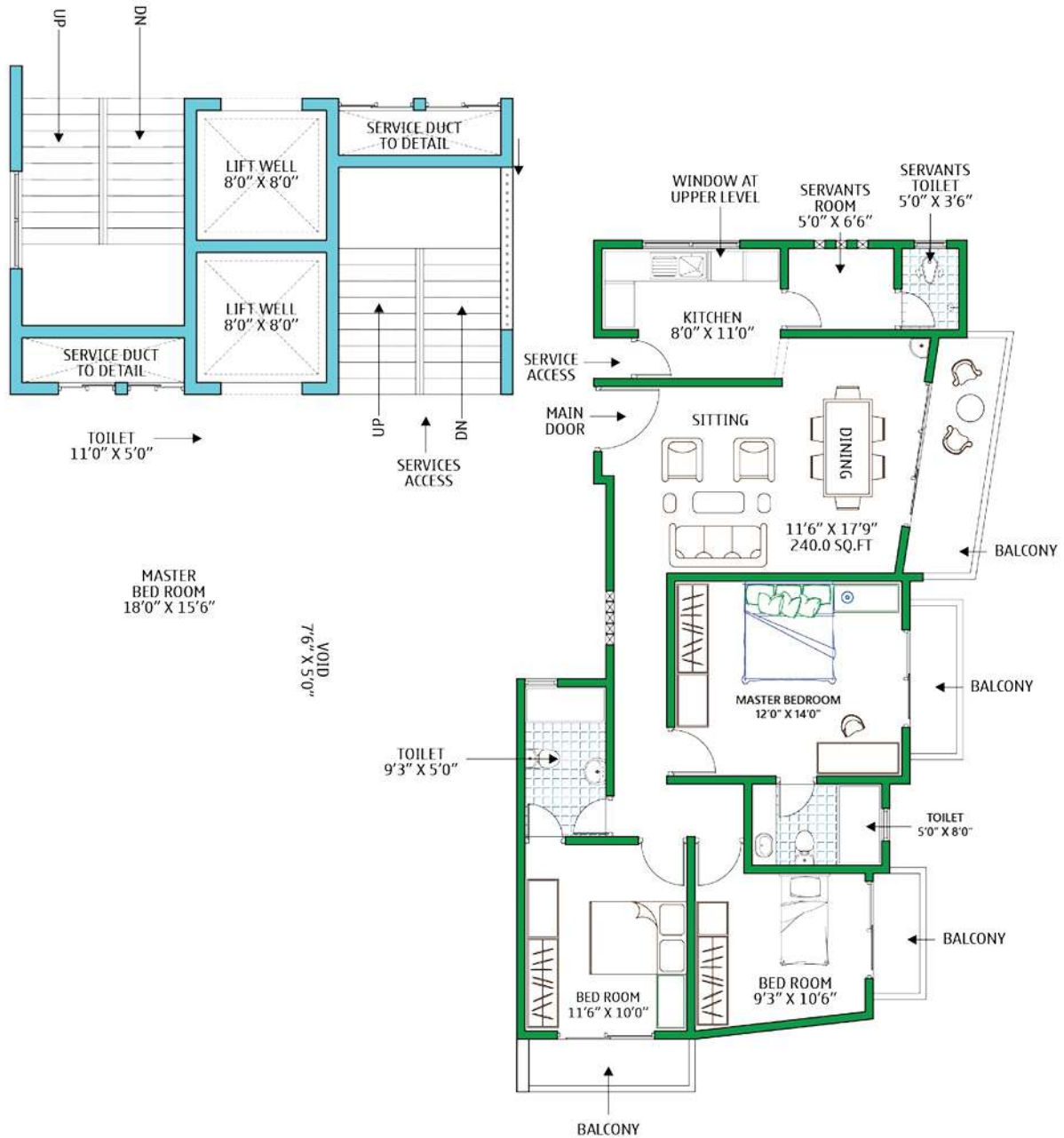


A modern kitchen scene featuring white cabinetry, a round dining table with watermelon, and a lamp. The text 'HELPING CREATE A BETTER FUTURE' is overlaid on the right side of the image, with a red diagonal line crossing through it.

HELPING CREATE
**A BETTER
FUTURE**



- 3 BEDROOMS
- A/C FOR MASTER BEDROOM
- A/C PROVISION FOR OTHER BEDROOM
- KITCHEN WITH PANTRY
- 2 ATTACHED TOILETS
- SERVANT ROOM & TOILET





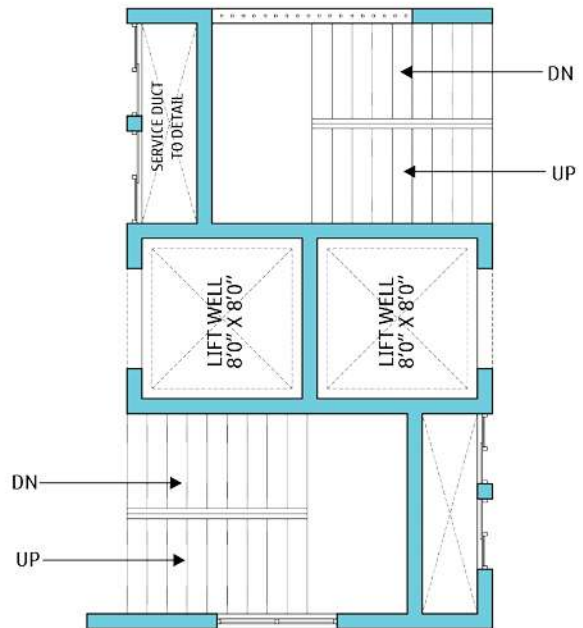
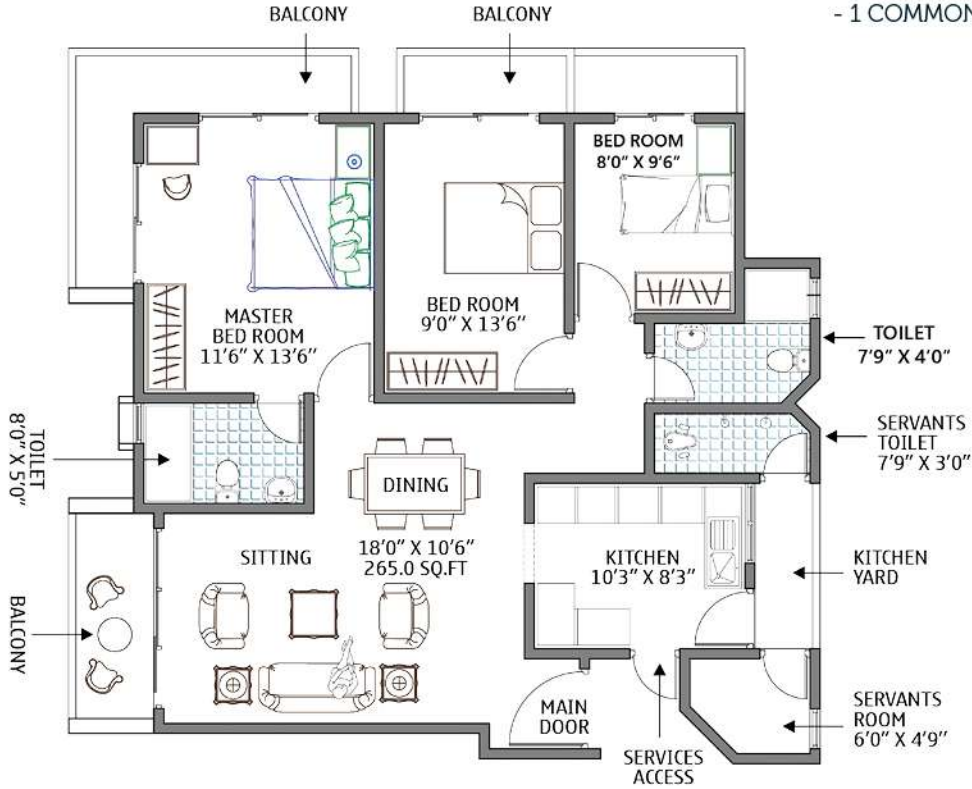


FROM
INCEPTION
THROUGH
COMPLETION





- 3 BEDROOMS
- A/C FOR MASTER BEDROOM
- A/C PROVISION FOR OTHER BEDROOM
- KITCHEN WITH PANTRY
- 1 ATTACHED TOILET
- 1 COMMON TOILET



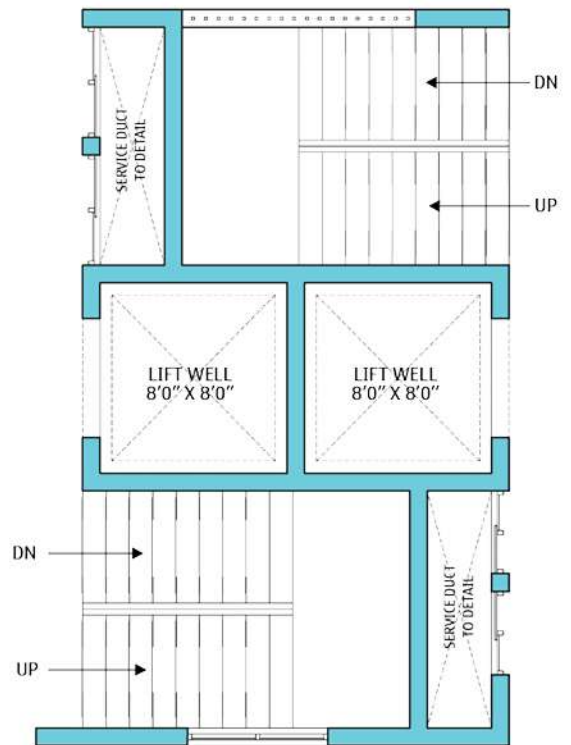
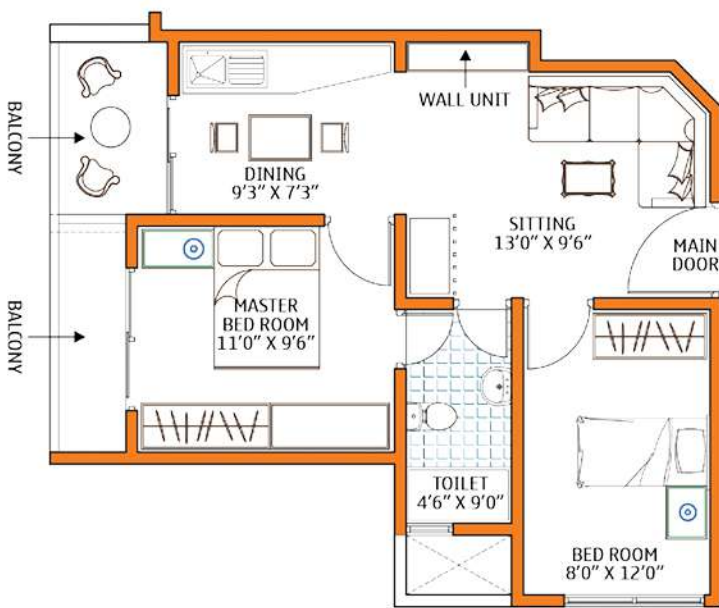






SPACE
FOR LIVING

- 2 BEDROOMS
- A/C FOR MASTER BEDROOM
- A/C PROVISION FOR OTHER BEDROOM
- KITCHEN WITH PANTRY
- 1 COMMON TOILET

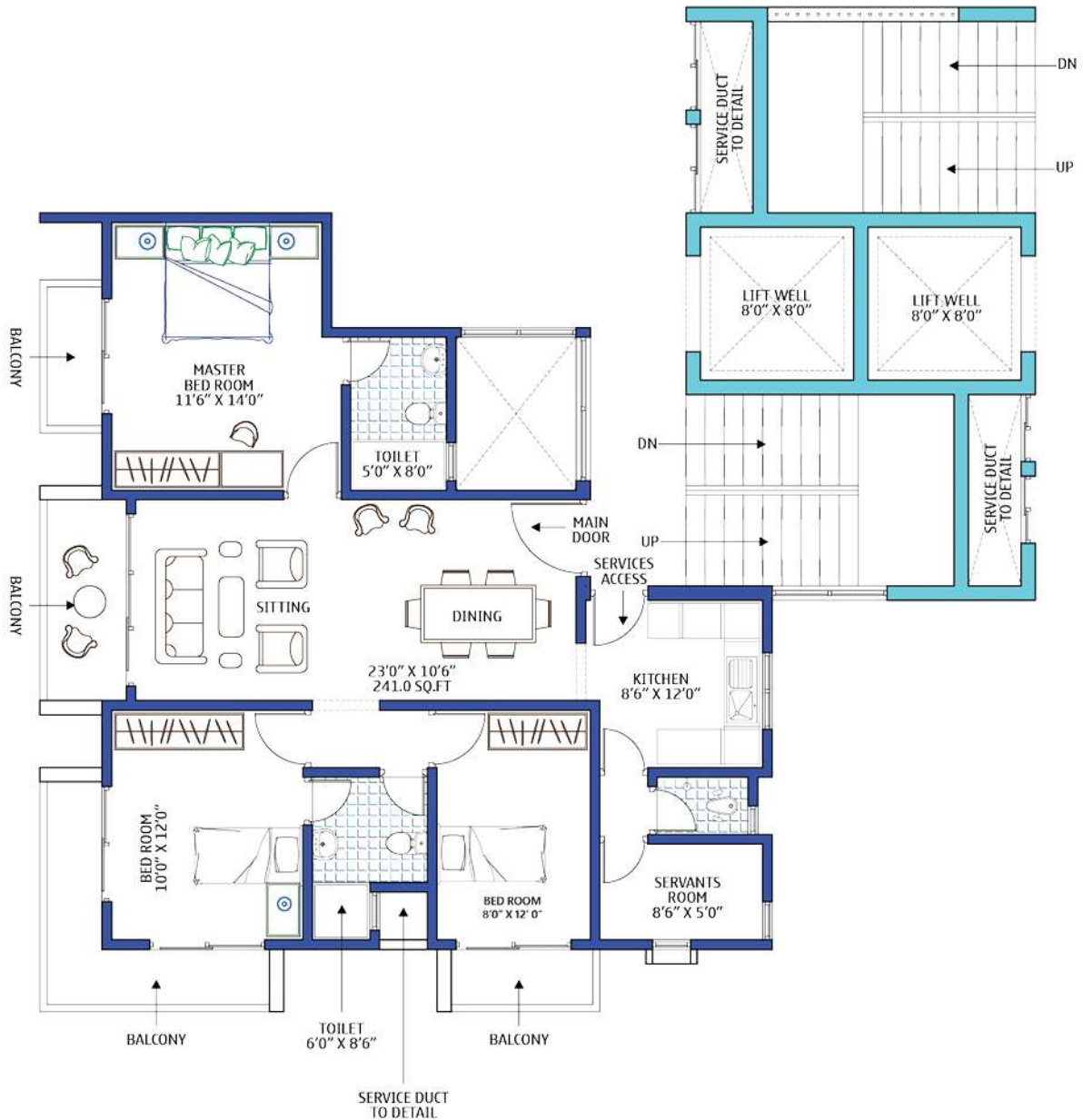


UNIT E 565 SQ.FT



Entrance

- 3 BEDROOMS
- A/C FOR MASTER BEDROOM
- A/C PROVISION FOR OTHER BEDROOM
- KITCHEN WITH PANTRY
- 2 ATTACHED TOILETS
- SERVANT ROOM & TOILET



UNIT F 1170 SQ.FT



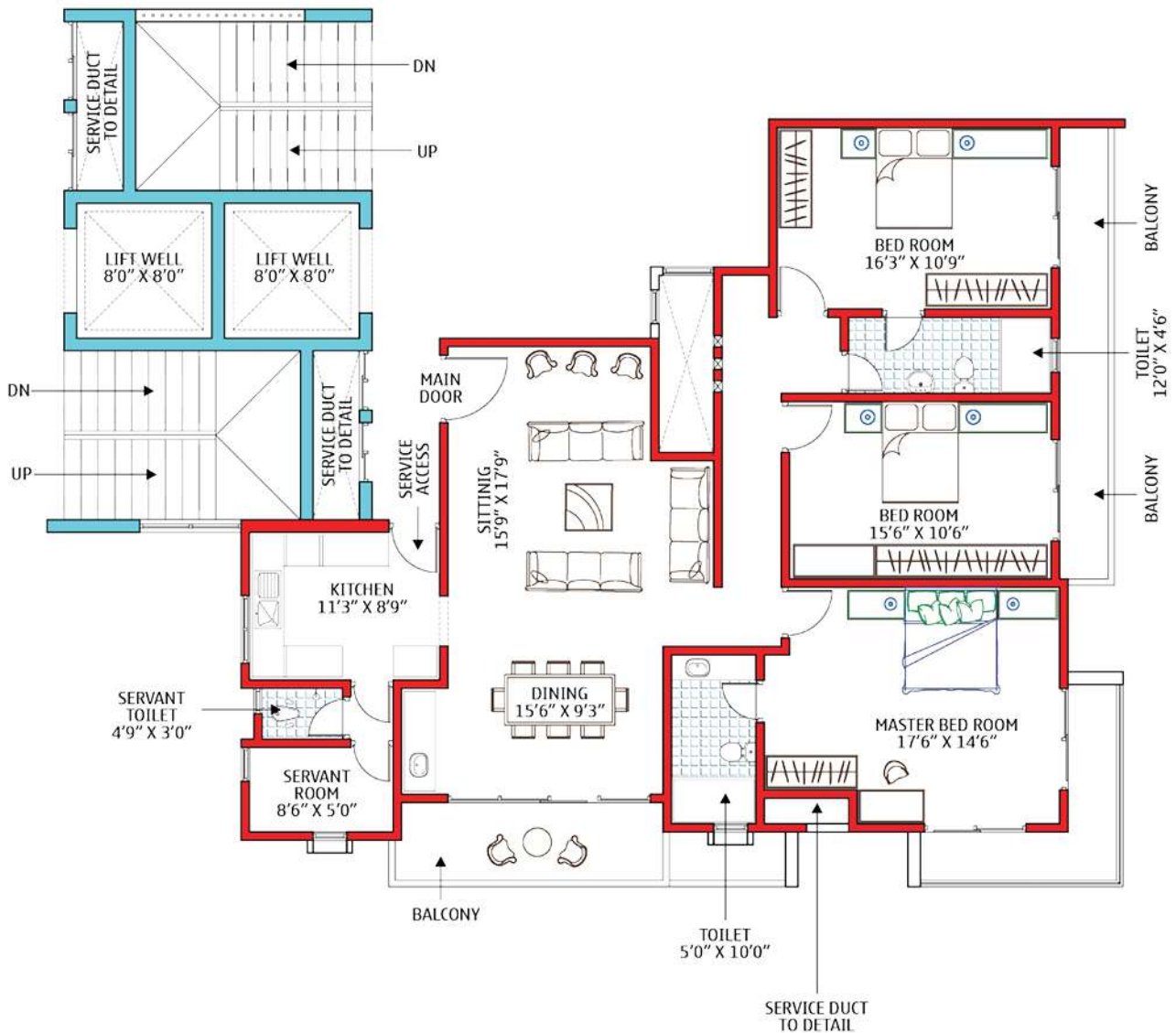
1170 SQ.FT



MAKE YOUR
DREAMS
INTO REALITY

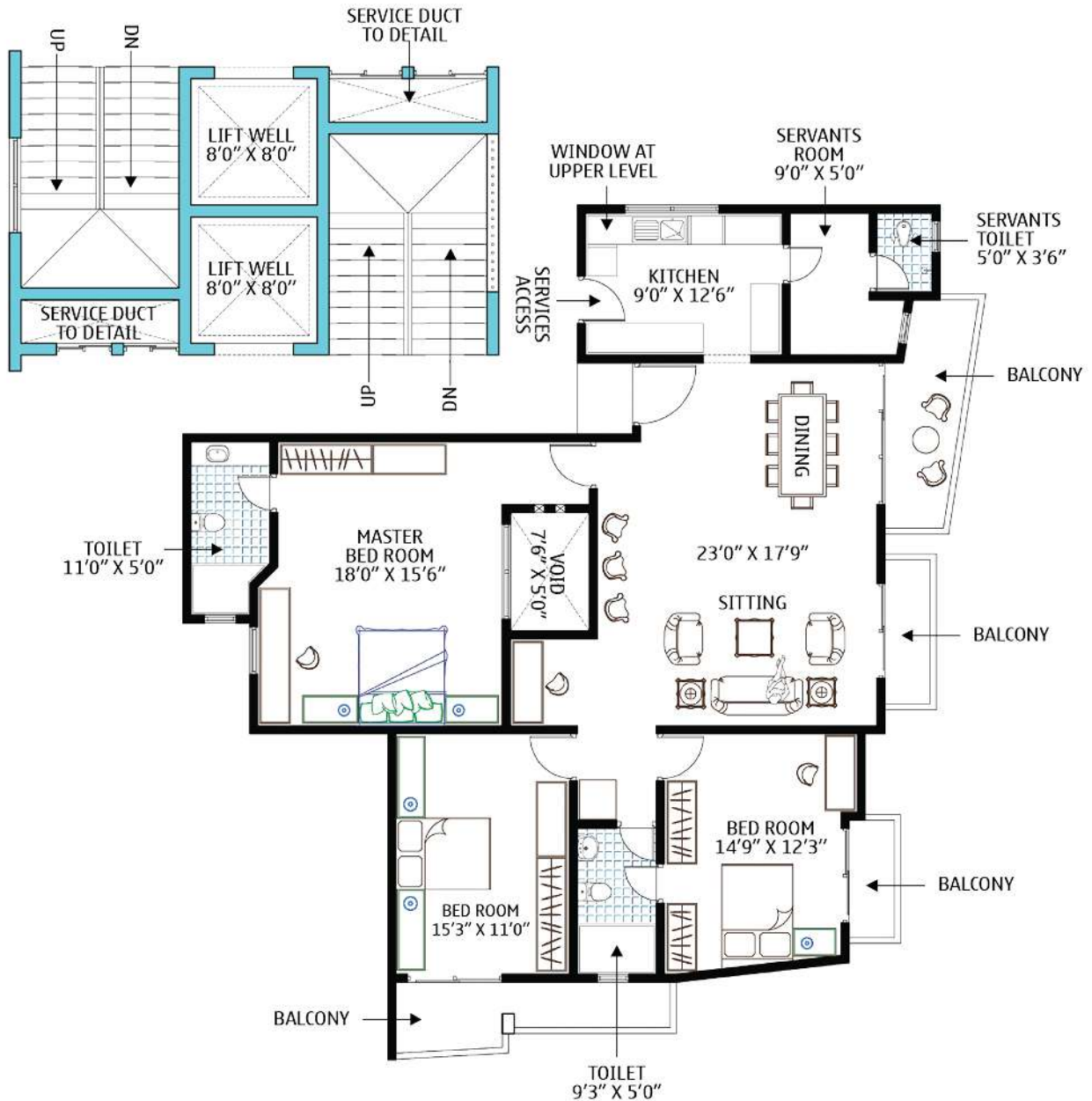


- 3 BEDROOMS
- A/C FOR MASTER BEDROOM
- A/C PROVISION FOR OTHER BEDROOM
- KITCHEN WITH PANTRY
- 2 ATTACHED TOILETS
- SERVANT ROOM & TOILET





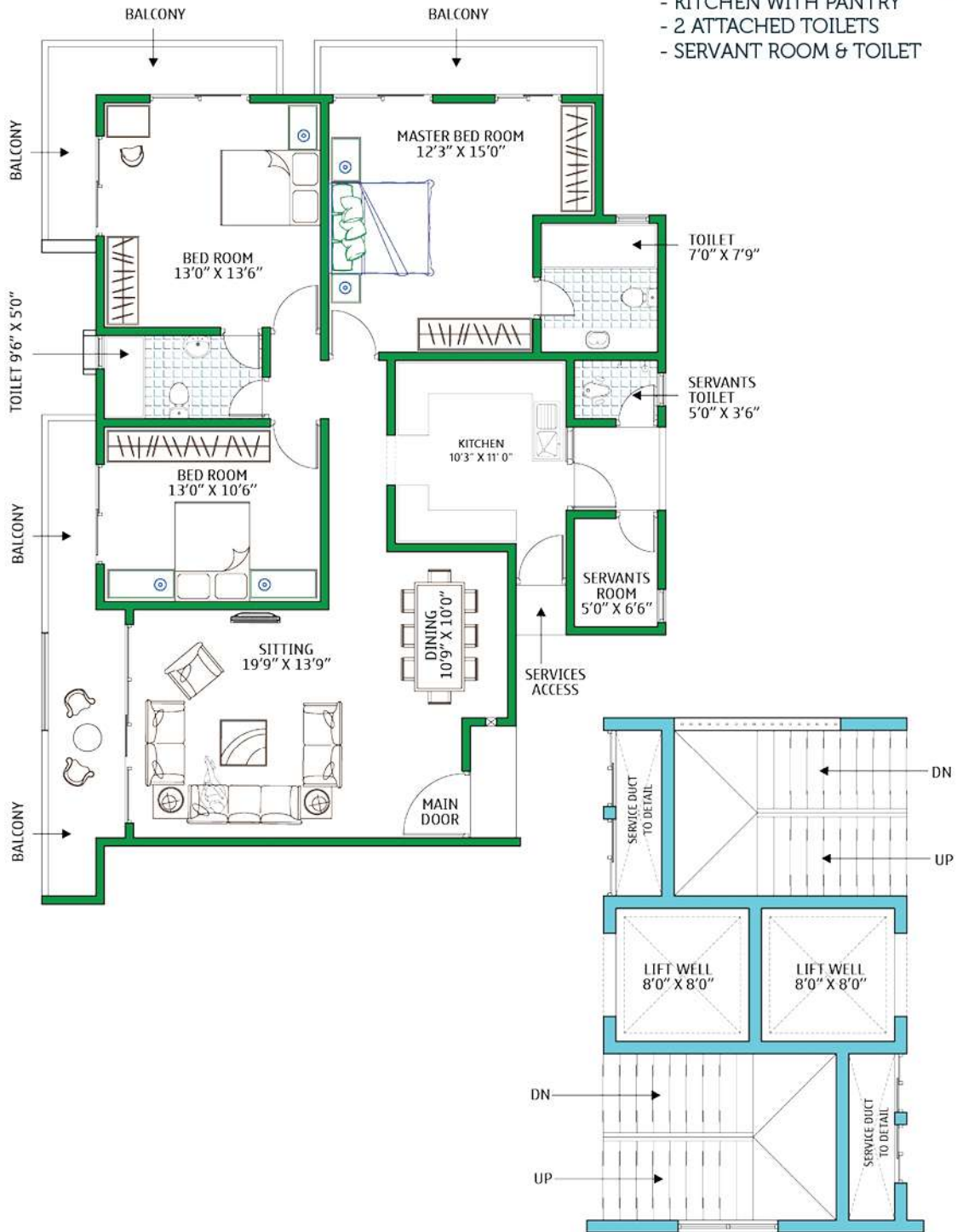
- 3 BEDROOMS
- A/C FOR MASTER BEDROOM
- A/C PROVISION FOR OTHER BEDROOM
- KITCHEN WITH PANTRY
- 2 ATTACHED TOILETS
- SERVANT ROOM & TOILET



UNIT H 1730 SQ.FT



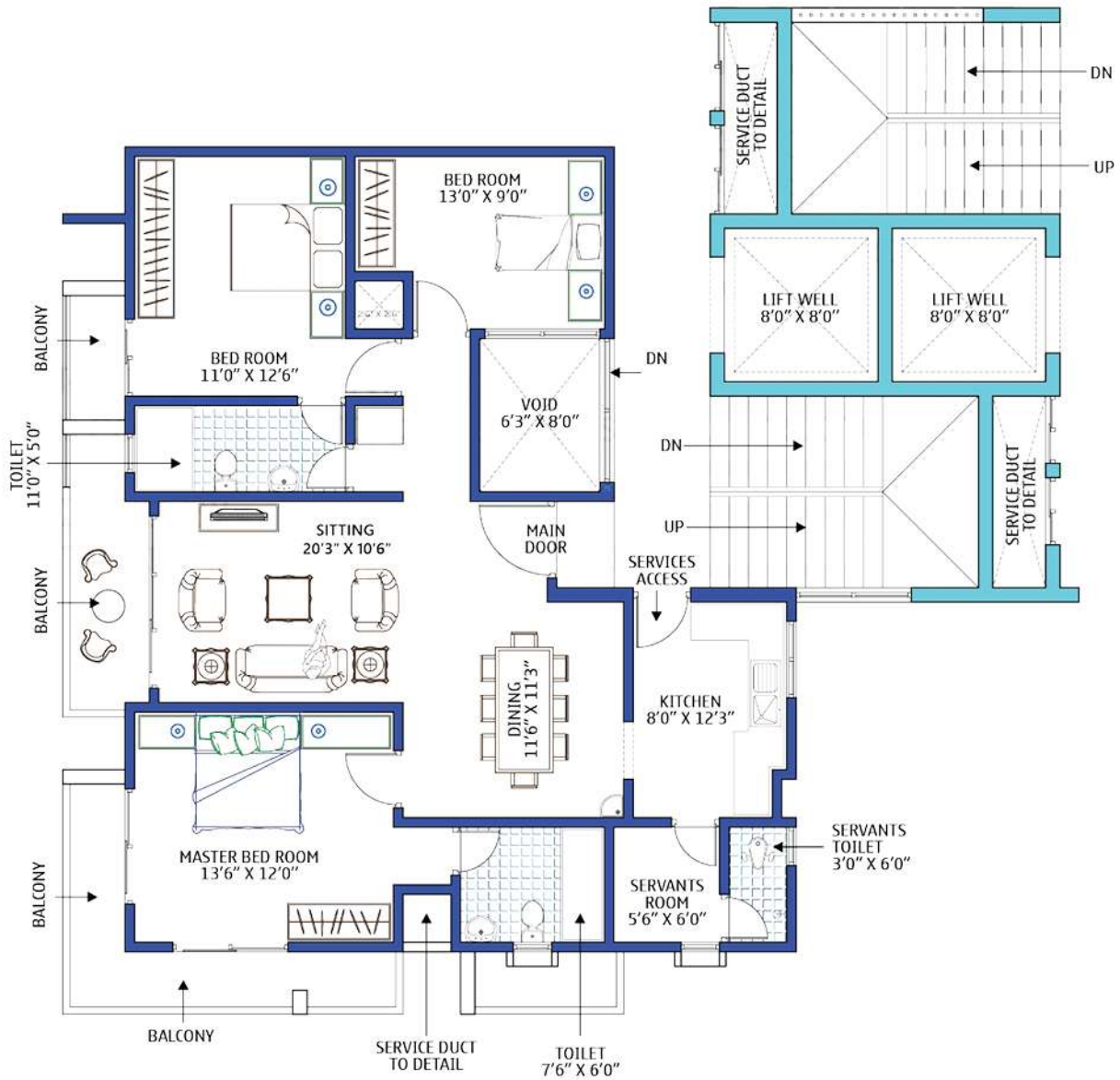
- 3 BEDROOMS
- A/C FOR MASTER BEDROOM
- A/C PROVISION FOR OTHER BEDROOMS
- KITCHEN WITH PANTRY
- 2 ATTACHED TOILETS
- SERVANT ROOM & TOILET





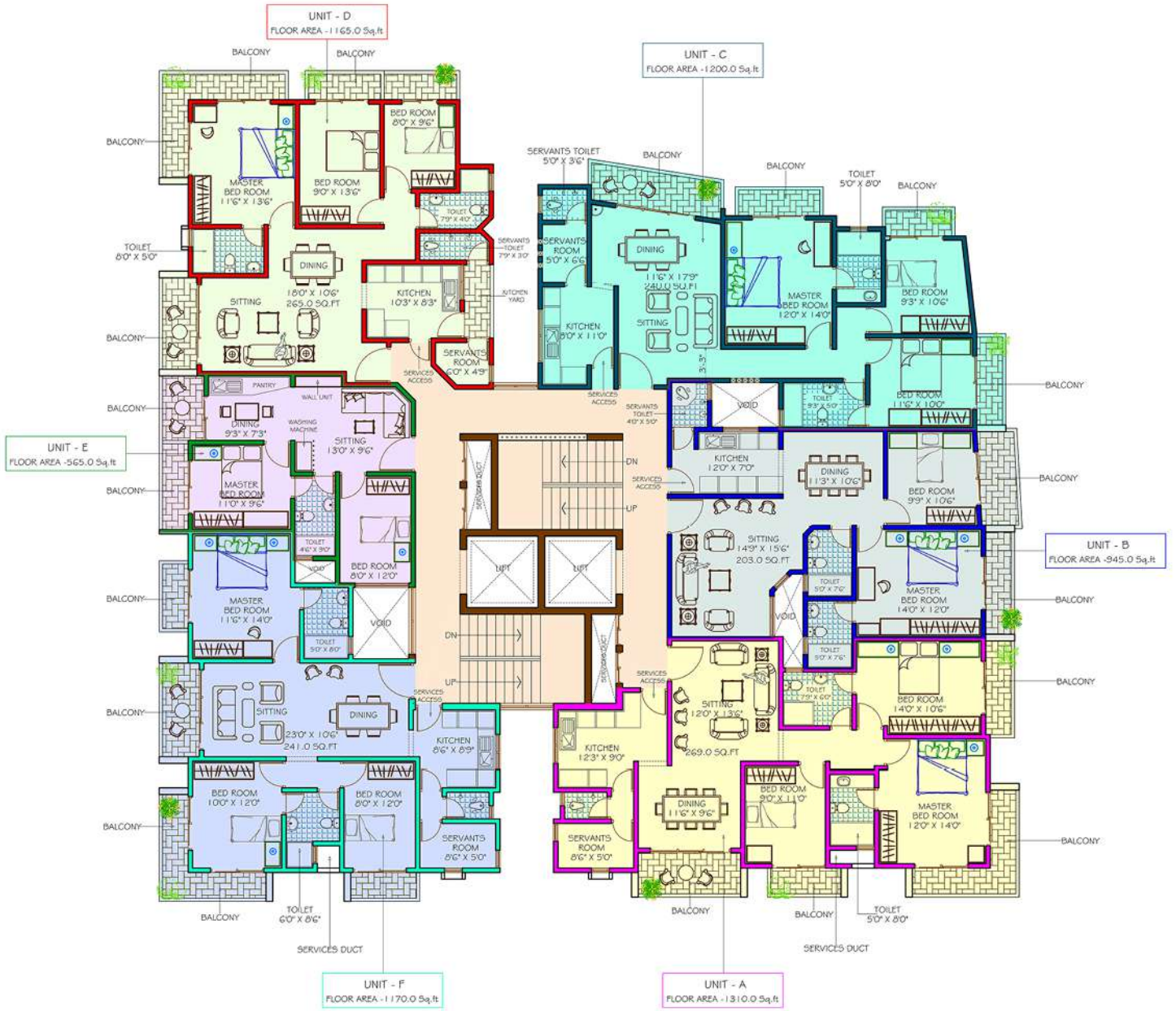
Entrance

- 3 BEDROOMS
- A/C FOR MASTER BEDROOM
- A/C PROVISION FOR OTHER BEDROOMS
- KITCHEN WITH PANTRY
- 2 ATTACHED TOILETS
- SERVANT ROOM & TOILET



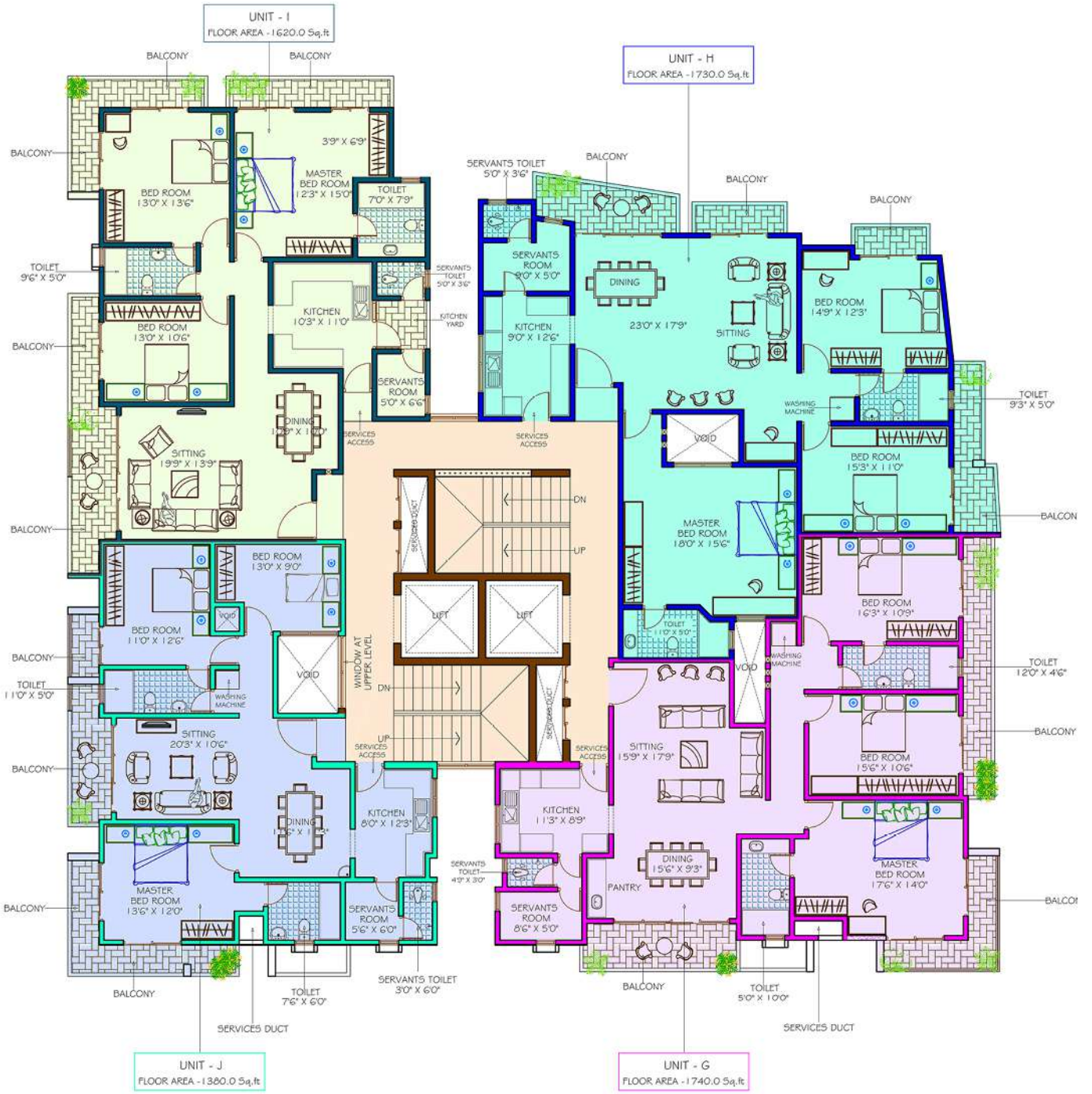


REAR SIDE



KAWDANA ROAD FACING

TYPICAL FLOOR PLAN (1ST TO 8TH)



KAWDANA ROAD FACING

9TH FLOOR PLAN



LOWER GROUND FLOOR PARKING



UPPER GROUND FLOOR PARKING

SPECIFICATIONS

The blueprint for Rush Residencies Kawdana details out impeccable quality and confinement that is reflected in ultra-premium specifications and luxury services that come with it.

● Foundation

- Raft Foundation / Piling

● Flooring

- Imported porcelain tiles for rooms and hall.
- Imported tile for bathroom and pantry.
- Imported tiles flooring for staircase and lobby.

● Doors and Windows

- Designed entrance mahogany doors.
- Mahogany wooden doors for rooms and bathroom/toilets (servant toilet powder coated aluminum door).
- Rust proof powder coated aluminum.

● Electrical Works/Fixtures

- High quality switches and fixtures with safety panels and high grade trip switch.
- Three phase electricity to common area.
- Separate meters.
- Stand by generators to common area (Auto change over system)

● General Specifications

- Fully approved free hold property.
- Dedicated parking slots for residents.
- Two high speed passenger elevators serving all levels.
- A/C provided for master bedroom and provision for other rooms.
- Hall and bedroom are fitted with ceiling fans and light fittings.
- Floor to floor height 10.5ft.
- TV outlets in hall and master bedroom.
- Telephone outlets in hall and master bedroom.
- Inter communication system from apartment to security.
- Stand by generator back up for common areas lighting, elevators, water pump and fire pumps.
- Optimal balance in lighting, ventilation and privacy.
- Door to door garbage collection, eliminating the issue of odor and pest in chutes and garbage storage rooms on the floor.
- Fully secured parapet wall right around.
- Lightning conductor.
- Maintenance agency to provide professional maintenance services.
- Water supply from the main line.
- Ground storage sump and over head tank on rooftop with pressure system.
- Rooftop garden/open area for B.B.Q reception and party facilities.
- Close proximity to schools, markets and all religious places.

● Fire protection system

- Fire extinguisher.
- Hose reels.
- Wet riser as per fire department requirements.

● Rooftop

- Ample space for function and recreation.
- Water and heat proof system.
- Roof terrace garden with panoramic views.

● Kitchen

- Sink with cold water tap.
- Mahogany pantry with granite top.
- Provision for washing machine.
- Imported tiles for pantry walls.

● Plumbing

- Imported sanitary fittings.
- Hot water geyser provided for bathrooms.
- Hand bidet spray.
- Single lever concealed shower mixer.
- Wash basin + pedestal with mixer tap.
- High quality plumbing finishes connected to the main municipal sewer lines/treatment plant.

All materials, fittings and equipment's are of international standards-reputed makes, with high quality finish all around. Conformity to all statutory and regulatory standards and requirements.



OUR PAST SUCCESSFUL & ONGOING PROJECTS



RUSH EBENEZ

No. 18, Ebermezer Place,
Dehiwala.

Completed project
Deeds issued



RUSH HOMES

No. 16, Annie Avenue,
Dehiwala.

Completed project
Deeds issued



RUSH COURT 2

No. 27, Vihara Mawatha,
Kolonnawa.

On going project



RUSH TOWER

No. 09, Council Avenue,
Dehiwala.

On going project



RUSH RELIANCE

No. 11, Templers Avenue,
Templers Road, Mt.lavinia.

On going project



RUSH
At the pinnacle of your expectation

For Bookings RUSH to:

0727 559382

0723 666699

0727 788847

At the pinnacle of your expectations

RUSH HOUSING (PRIVATE) LTD.

Head Office : 752, Prince of Wales Avenue, Colombo 14.

Sales Office : 147, Kawdana Road, Dehiwala.

Tel : 0112 446 924 Fax : 0112 438 521

E-mail : rush@rushlankagroup.com



Note : Terms & Conditions apply. This Presentation is not to be construed as a binding offer.