



# RUSH METROPOLIS

No. 05, Jayanthi Road, Dehiwala.

A tall, modern skyscraper with a curved facade and illuminated balconies, set against a dark blue night sky. The building has a dark base with the word 'RUSH' in red letters. The overall scene is a promotional image for a residential project.

# RUSH METROPOLIS

No. 05 Jayanthi Road, Dehiwala.

Rush Metropolis offers an unparalleled living experience featuring a modern aesthetic, combining style and comfort to create a perfect home environment. Conveniently located on Jayanthi Mawatha, enjoy easy access to all the amenities and attractions Dehiwala has to offer. At Rush Metropolis, we prioritize your comfort and convenience, providing a living space that caters to all aspects of modern urban life.

125

UNITS

23

LEVELS

2/3

BEDROOMS

Structural Engineer  
Mr. Laksiri Cooray

Bsc.ENG, (C.ENG), MIE(SL),  
AMI Structure

Architect  
Mr. Anushka Dassanayaka

AIA(SL)

Developer  
Rush Lanka Group

**Note:** Terms & Conditions apply. This presentation is not to be construed as a binding offer.



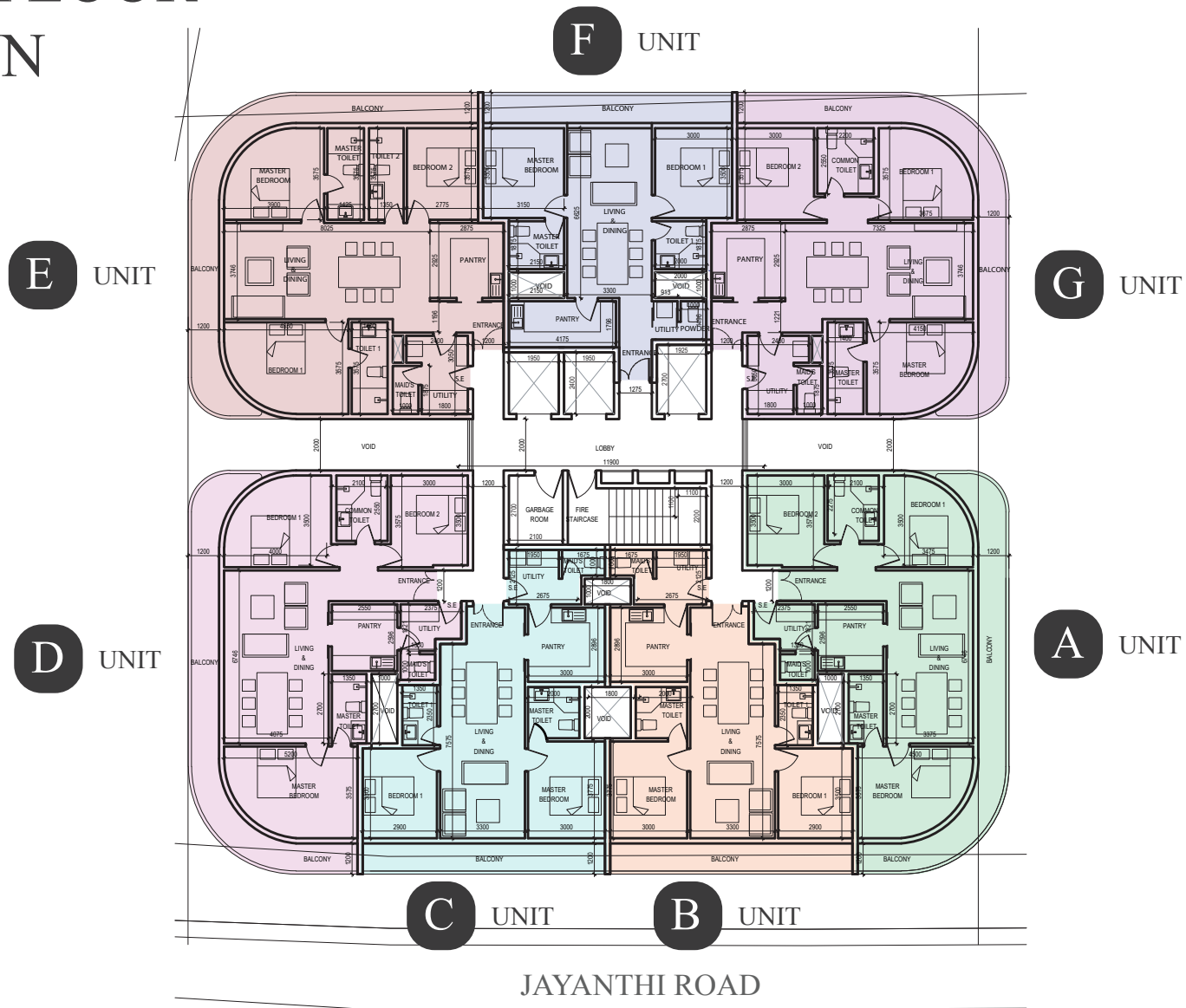
# LIVING ROOM

Note: Terms & Conditions apply. This presentation is not intended to be a binding offer.



**Note:** Terms & Conditions apply. This presentation is not to be construed as a binding offer.

# TYPICAL FLOOR PLAN



This presentation contains purely conceptual illustrations of the end product, which may vary in design, style, colour, material or layout from the depictions contained herein. Stated floor areas are approximate measurements only, subject to final survey. The developer reserves the right to modify any part or parts of the building prior to completion. Nothing herein contained nor anything omitted here from may be construed as being material representation resulting in a legal liability to the developer in any manner whatsoever. The depictions of furnishings are for reference only.

# TYPICAL FLOOR PLAN

# 3D VIEW



This 3D image is not to be construed as a final product. However, interior design such as this is possible for the apartments.  
Note: Terms & Conditions apply. This presentation is not to be construed as a binding offer.



# UNIT A

## 3D VIEW



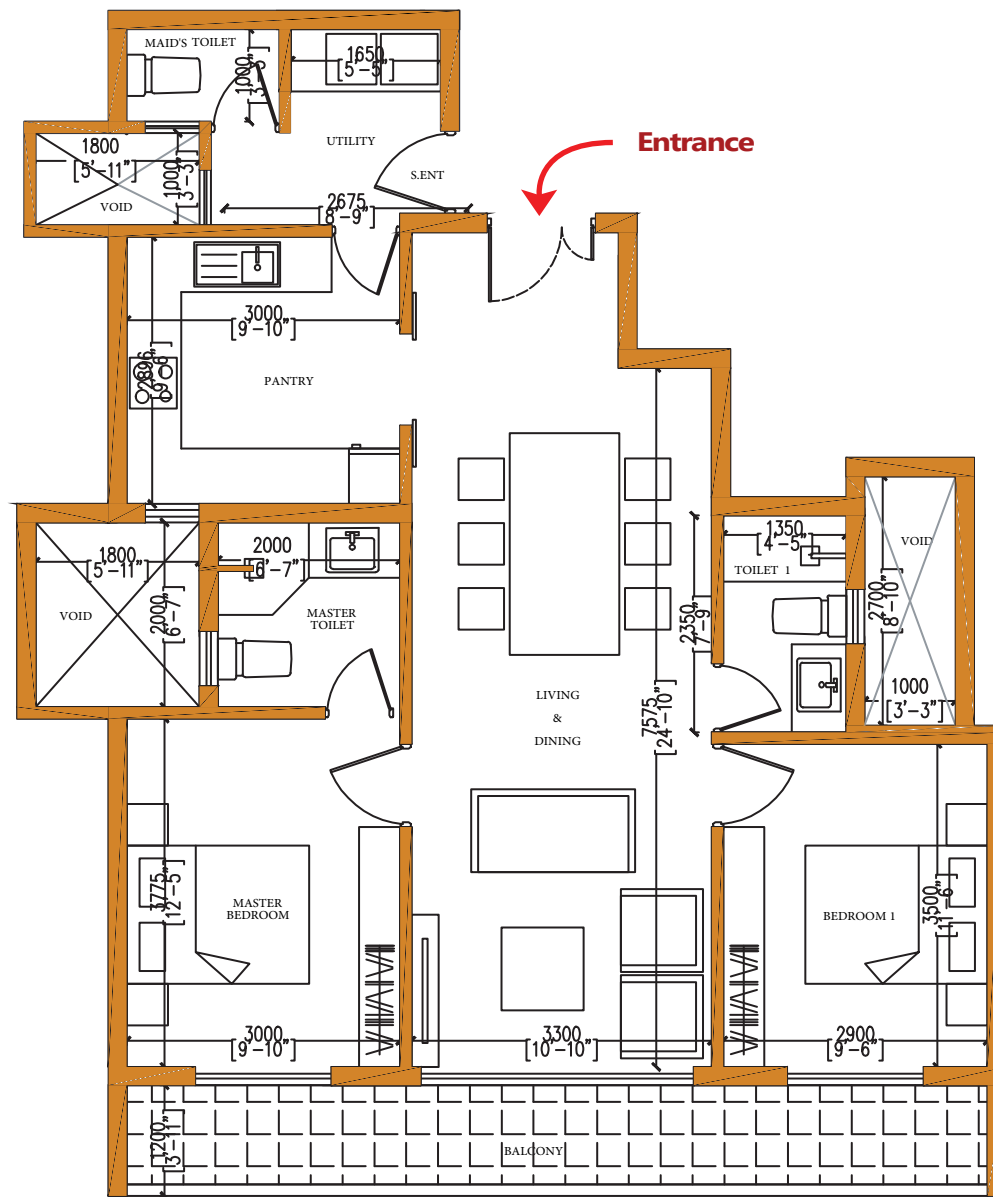
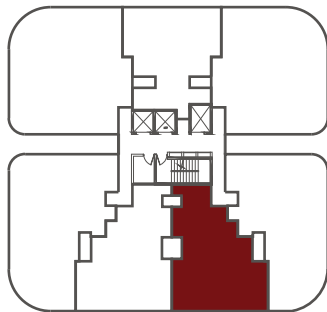
This 3D image is not be construed as a final product. However, interior design such as this is possible for the apartments.  
Note: Terms & Conditions apply. This presentation is not to be construed as a binding offer.



# UNIT B

## 2 BEDROOMS

988 Sq.ft



This presentation contains purely conceptual illustrations of the end product, which may vary in design, style, colour, material or layout from the depictions contained herein. Stated floor areas are approximate measurements only, subject to final survey. The developer reserves the right to modify any part or parts of the building prior to completion. Nothing herein contained nor anything omitted here from may be construed as being material representation resulting in a legal liability to the developer in any manner whatsoever. The depictions of furnishings are for reference only.

# UNIT B

3D VIEW



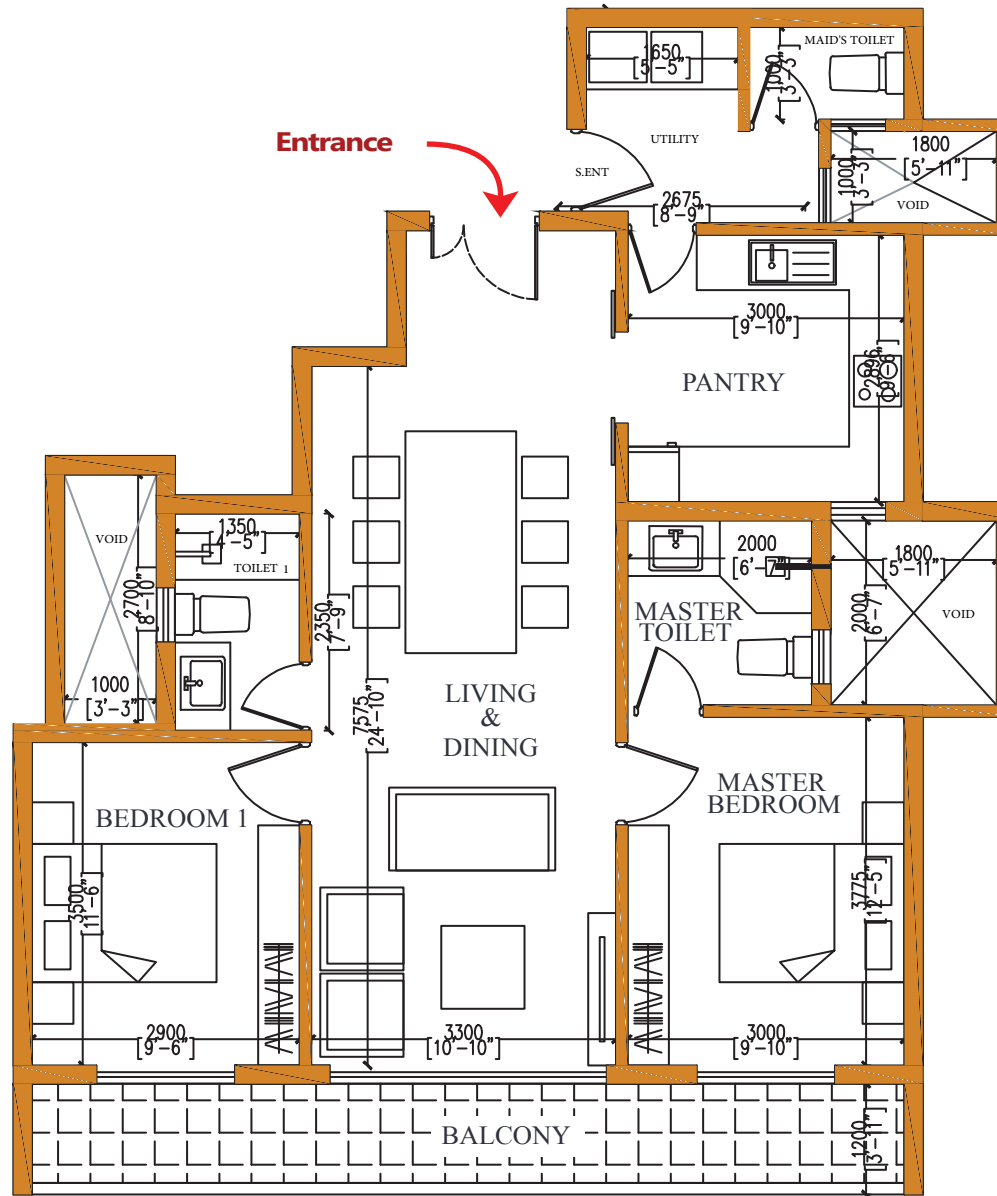
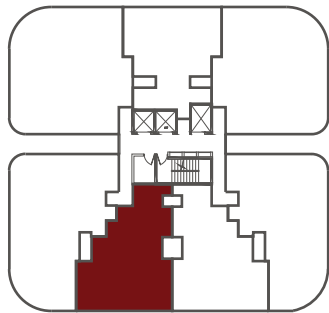
This 3D image is not be construed as a final product. However, interior design such as this is possible for the apartments.

Note: Terms & Conditions apply. This presentation is not to be construed as a binding offer.

# UNIT C

## 2 BEDROOMS

998 Sq.ft



This presentation contains purely conceptual illustrations of the end product, which may vary in design, style, colour, material or layout from the depictions contained herein. Stated floor areas are approximate measurements only, subject to final survey. The developer reserves the right to modify any part or parts of the building prior to completion. Nothing herein contained nor anything omitted here from may be construed as being material representation resulting in a legal liability to the developer in any manner whatsoever. The depictions of furnishings are for reference only.

# UNIT C

## 3D VIEW



This 3D image is not to be construed as a final product. However, interior design such as this is possible for the apartments.

Note: Terms & Conditions apply. This presentation is not to be construed as a binding offer.



# BEDROOM

Note: Terms & Conditions apply. This presentation is not to be construed as a binding offer.



Note: Terms & Conditions apply. This presentation is not to be construed as a binding offer.



# DINING AREA

Note: Terms & Conditions apply. This presentation is not to be construed as a binding offer.



# KITCHEN

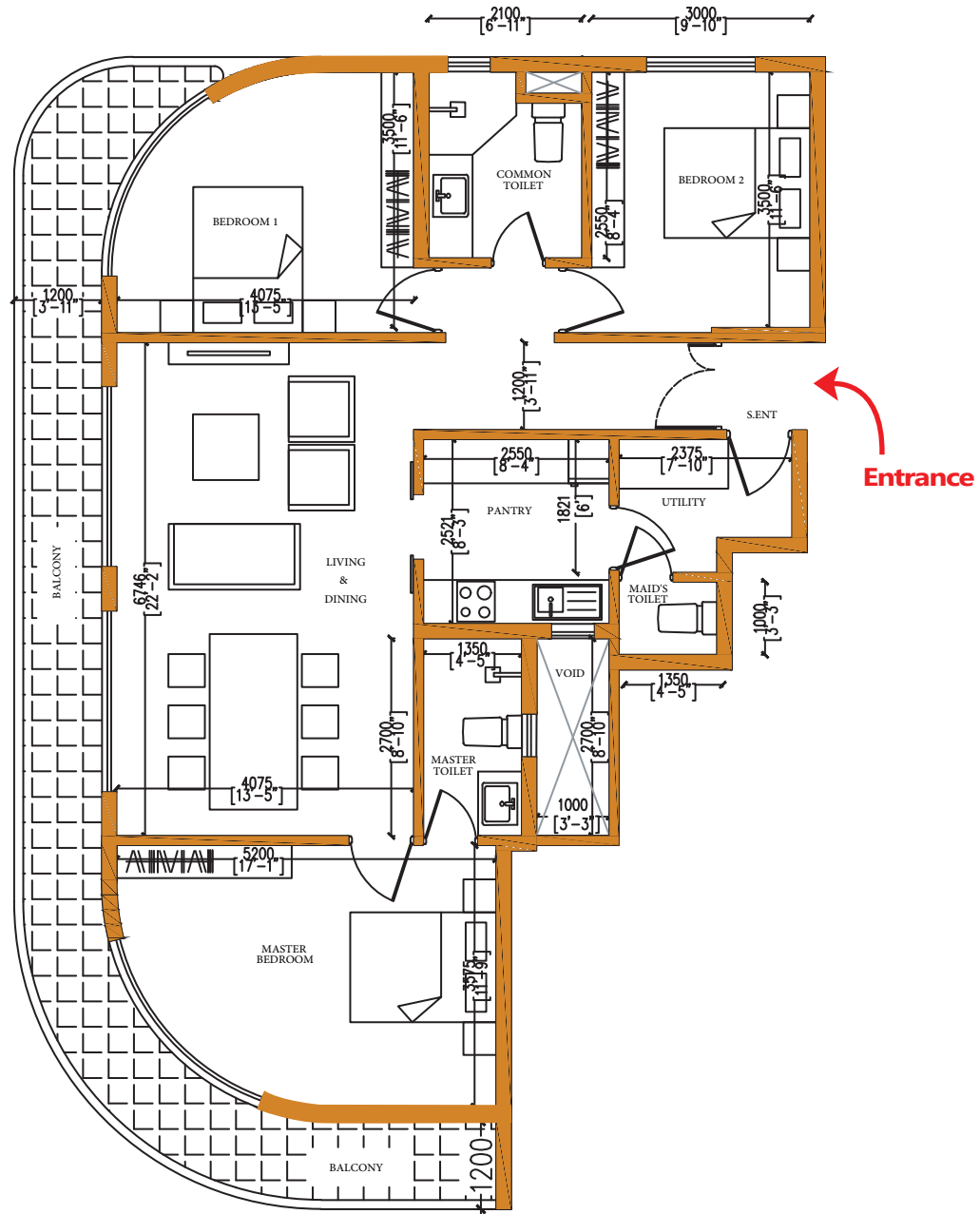
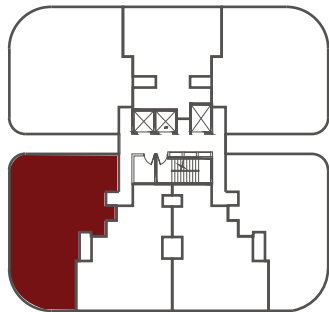
Note: Terms & Conditions apply. This presentation is not to be construed as a binding offer.



# UNIT D

## 3 BEDROOMS

1430 Sq.ft



This presentation contains purely conceptual illustrations of the end product, which may vary in design, style, colour, material or layout from the depictions contained herein. Stated floor areas are approximate measurements only, subject to final survey. The developer reserves the right to modify any part or parts of the building prior to completion. Nothing herein contained nor anything omitted here from may be construed as being material representation resulting in a legal liability to the developer in any manner whatsoever. The depictions of furnishings are for reference only.

# UNIT D

## 3D VIEW



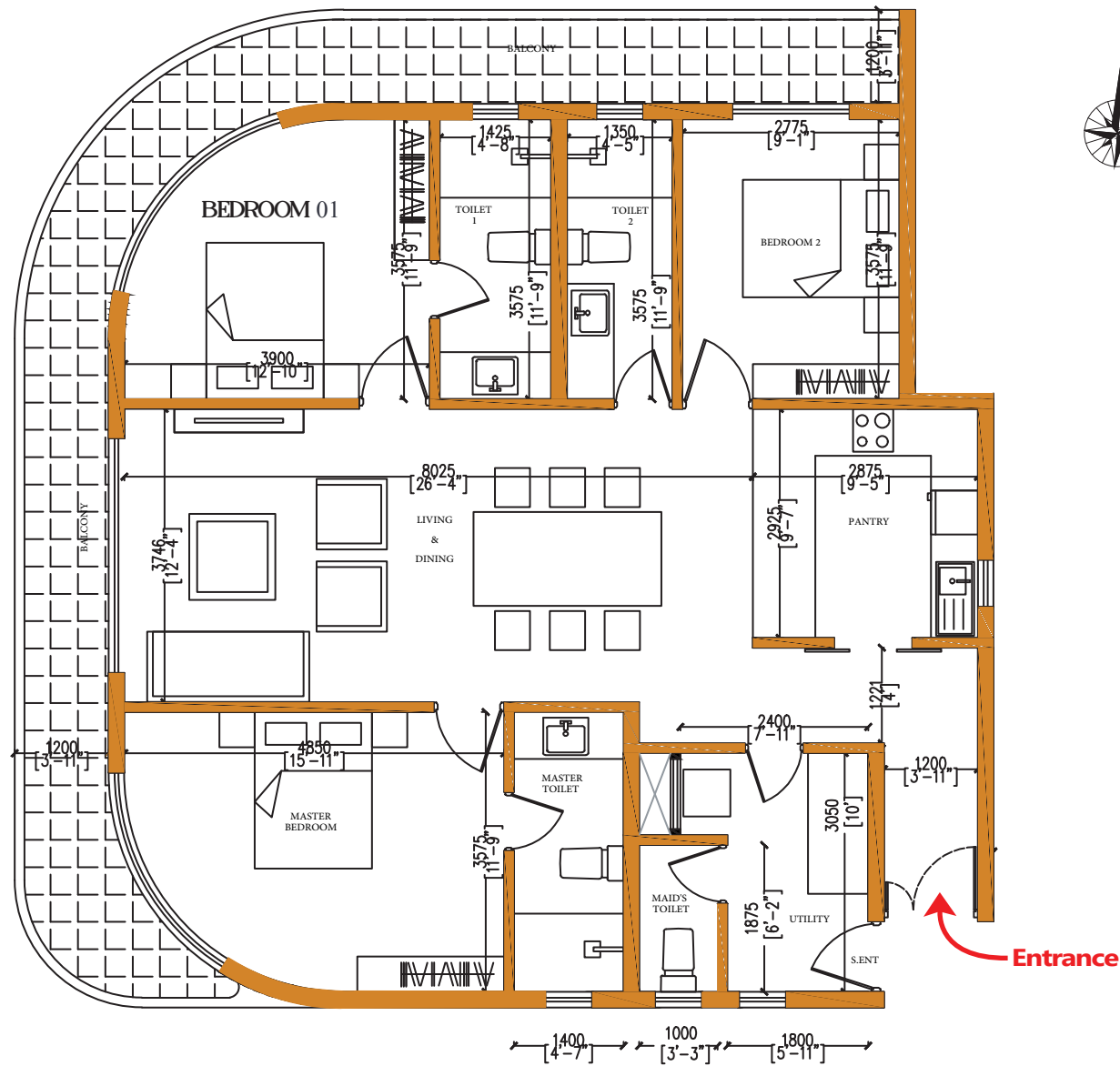
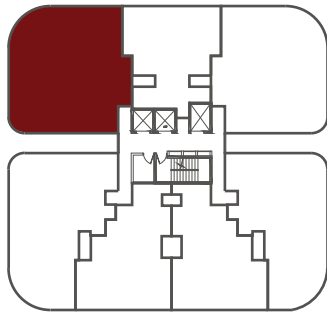
This 3D image is not to be construed as a final product. However, interior design such as this is possible for the apartments.

Note: Terms & Conditions apply. This presentation is not to be construed as a binding offer.

# UNIT E

## 3 BEDROOMS

1581 Sq.ft



This presentation contains purely conceptual illustrations of the end product, which may vary in design, style, colour, material or layout from the depictions contained herein. Stated floor areas are approximate measurements only, subject to final survey. The developer reserves the right to modify any part or parts of the building prior to completion. Nothing herein contained nor anything omitted here from may be construed as being material representation resulting in a legal liability to the developer in any manner whatsoever. The depictions of furnishings are for reference only.

# UNIT E

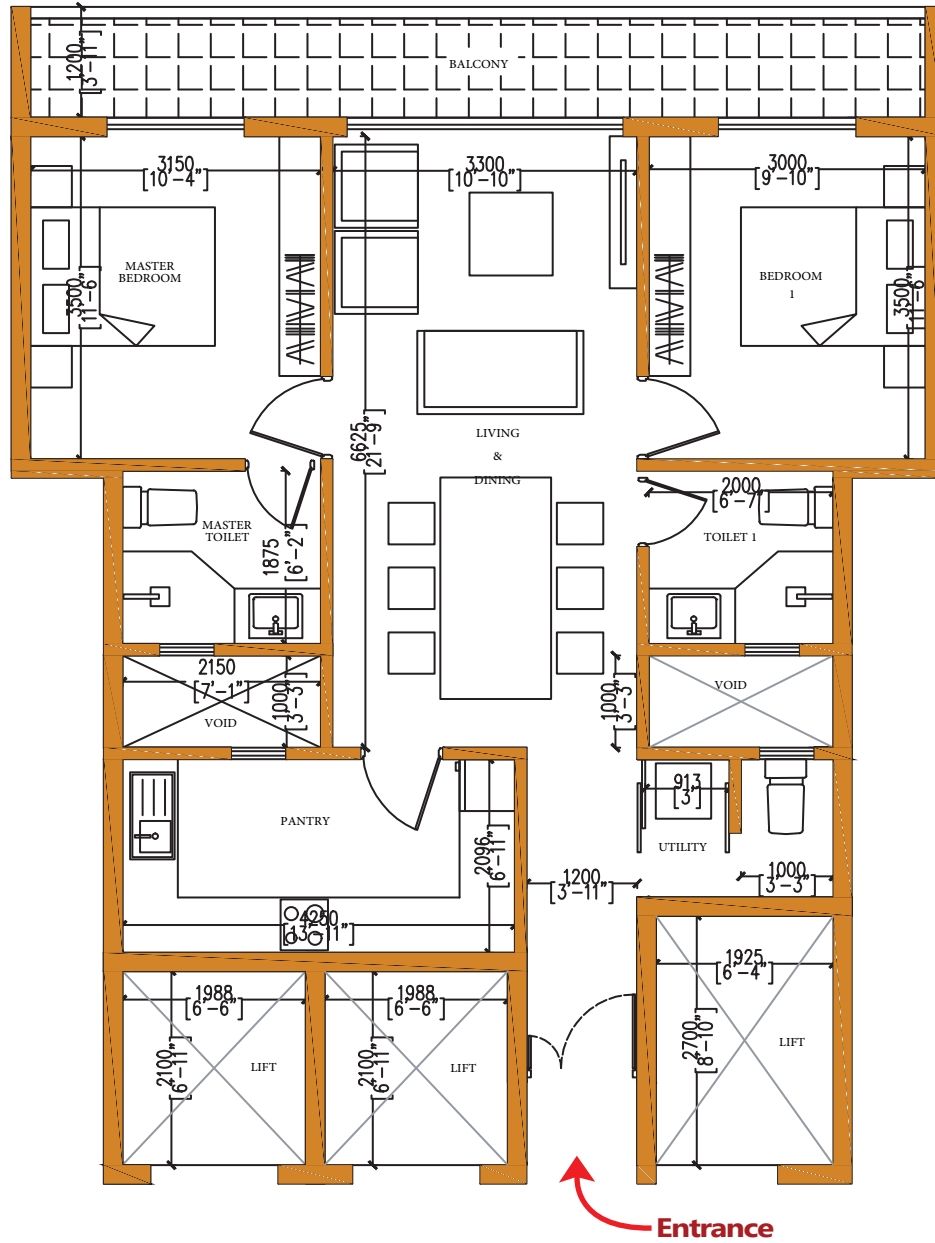
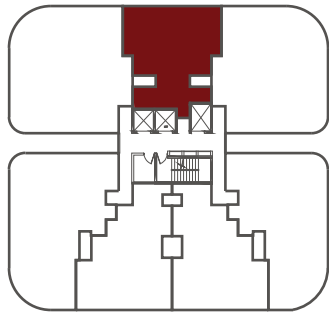
## 3D VIEW



This 3D image is not be construed as a final product. However, interior design such as this is possible for the apartments.  
Note: Terms & Conditions apply. This presentation is not to be construed as a binding offer.

# UNIT F 2 BEDROOMS

932 Sq.ft



This presentation contains purely conceptual illustrations of the end product, which may vary in design, style, colour, material or layout from the depictions contained herein. Stated floor areas are approximate measurements only, subject to final survey. The developer reserves the right to modify any part or parts of the building prior to completion. Nothing herein contained nor anything omitted here from may be construed as being material representation resulting in a legal liability to the developer in any manner whatsoever. The depictions of furnishings are for reference only.

# UNIT F

## 3D VIEW

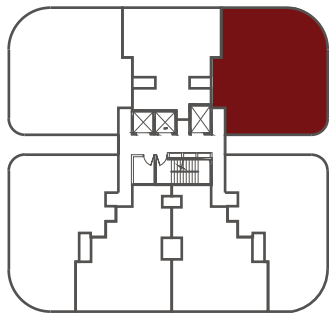
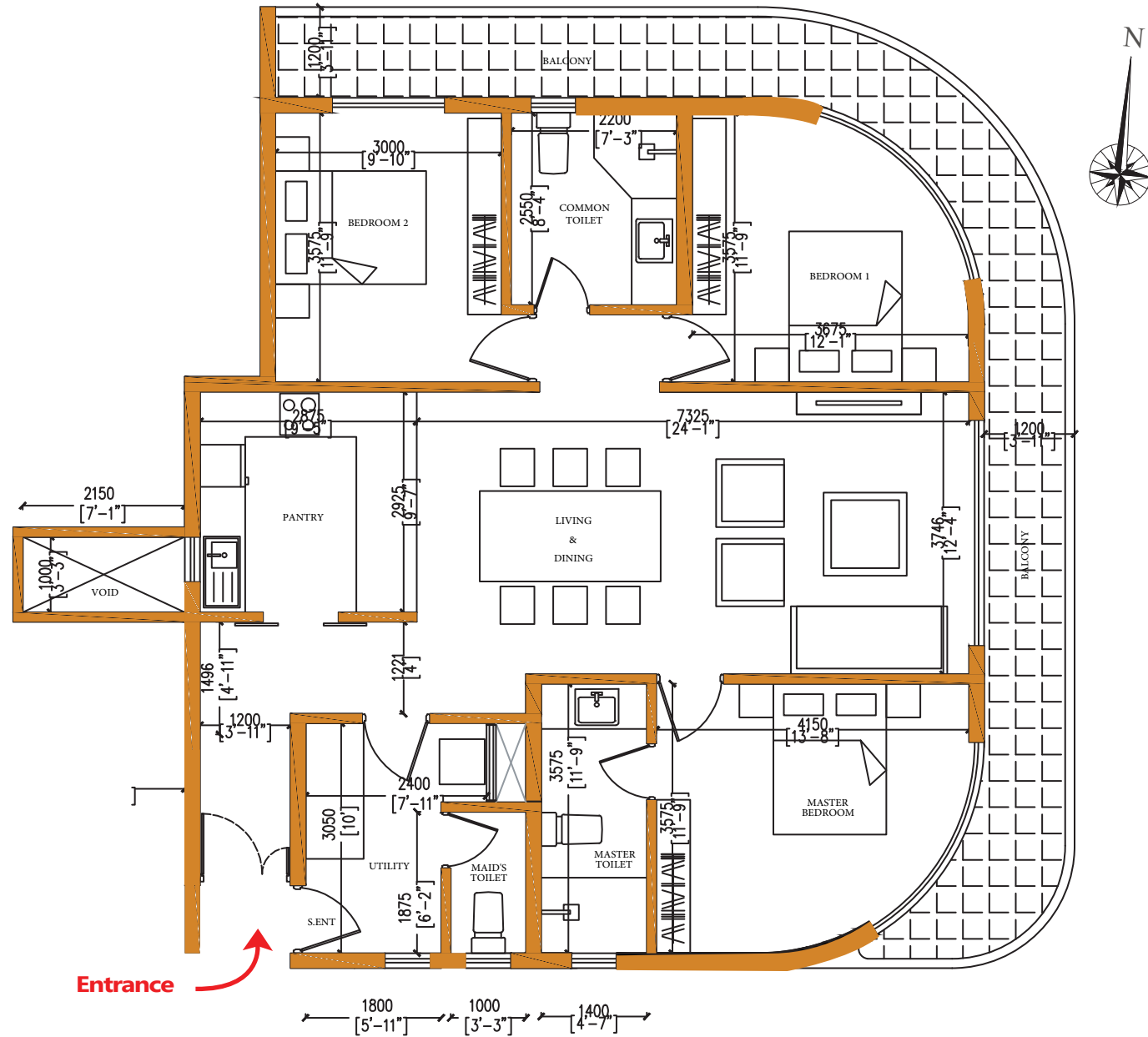


This 3D image is not be construed as a final product. However, interior design such as this is possible for the apartments.  
Note: Terms & Conditions apply. This presentation is not to be construed as a binding offer.

# UNIT G

## 3 BEDROOMS

1484 Sq.ft



This presentation contains purely conceptual illustrations of the end product, which may vary in design, style, colour, material or layout from the depictions contained herein. Stated floor areas are approximate measurements only, subject to final survey. The developer reserves the right to modify any part or parts of the building prior to completion. Nothing herein contained nor anything omitted here from may be construed as being material representation resulting in a legal liability to the developer in any manner whatsoever. The depictions of furnishings are for reference only.

# UNIT G

## 3D VIEW



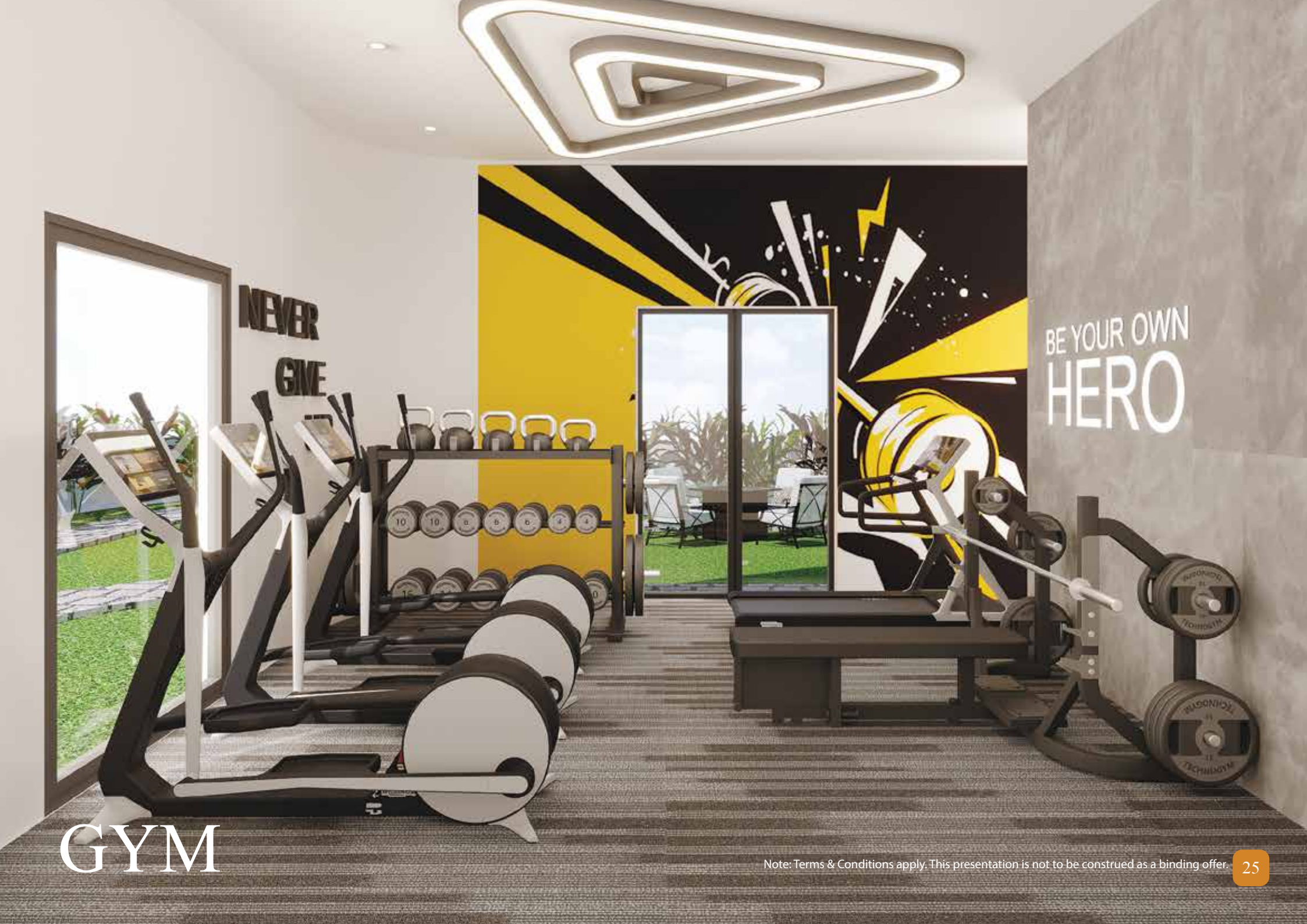
This 3D image is not to be construed as a final product. However, interior design such as this is possible for the apartments.  
Note: Terms & Conditions apply. This presentation is not to be construed as a binding offer.





# BATHROOM

Note: Terms & Conditions apply. This presentation is not to be construed as a binding offer.



NEVER  
GIVE

BE YOUR OWN  
HERO

# GYM

Note: Terms & Conditions apply. This presentation is not to be construed as a binding offer.



Note: Terms & Conditions apply. This presentation is not to be construed as a binding offer.

# SPECIFICATIONS

## Foundation

- Raft Foundation/ Piling

## Flooring

- Imported porcelain tiles for rooms and hall
- Imported tile for bathroom and pantry
- Imported tiles flooring for staircase and lobby

## Doors and Windows

- Designed entrance Hard wooden doors
- Hard Wooden doors for rooms and bathroom/ toilets (servant toilet powder coated aluminum door)
- Rust proof powder coated aluminum

## Kitchen

- Sink with cold water tap
- Modern pantry with granite top
- Provision for washing machine
- Imported tiles for pantry walls.

## Electrical Works/ Fixtures

- High quality switches and fixtures with safety panels and high grade trip switch.
- Three phase electricity to common area.
- Seperate meters.

## Plumbing

- Imported sanitary fittings
- Hot water geyser provided for bathrooms
- Hand bidset spray
- Single lever concealed shower mixer.

- Wash basin+ pedestal with mixer tap
- High quality plumbing finishes connected to the main municipal sewer lines/ treatment plant

## Fire protection system

- Fire extinguisher
- Hose reels
- Wet riser as per fire department requirements

## Rooftop

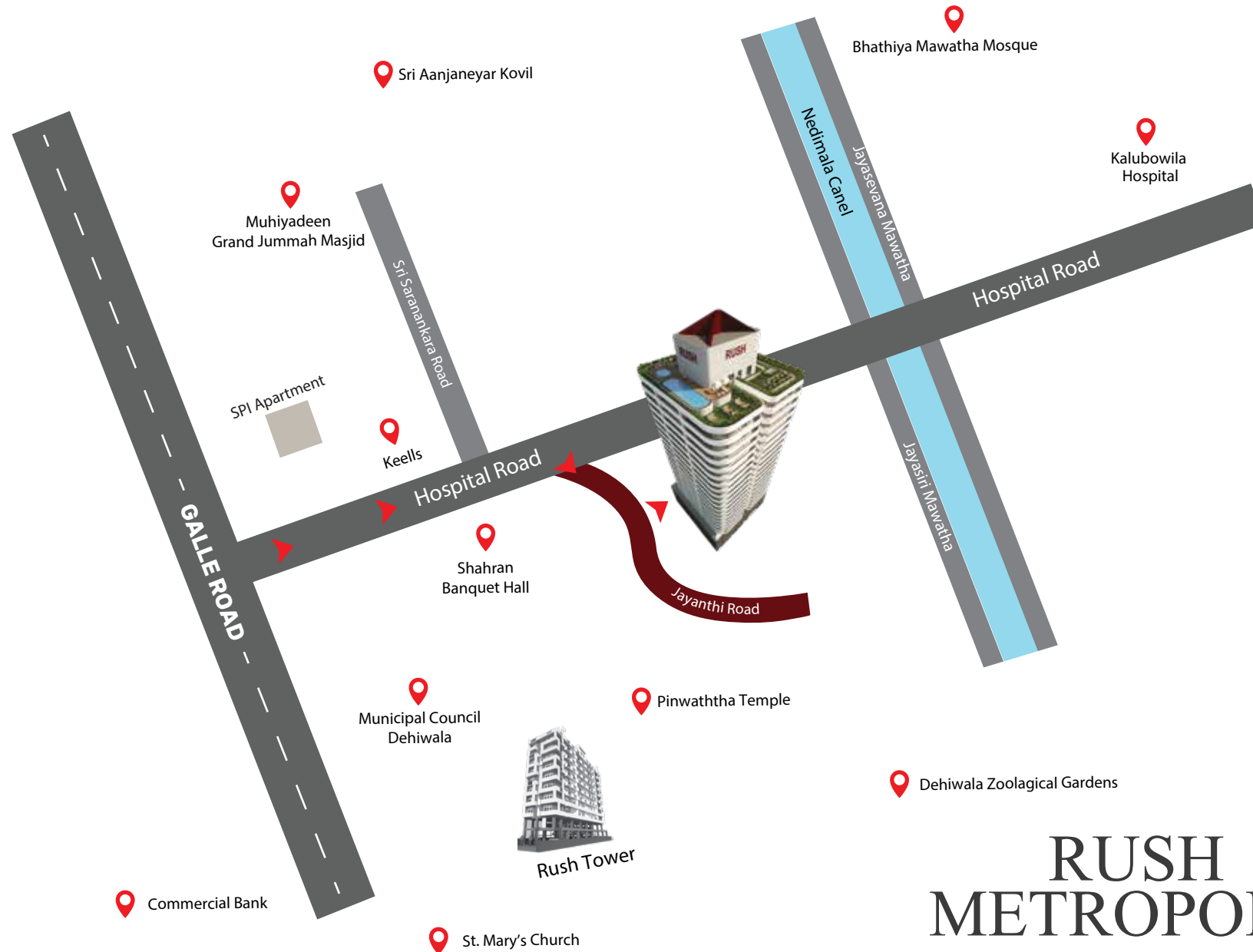
- Swimming pool with kids pool
- Fully equipped gymnasium
- Kids play area
- Open area for B.B.Q reception, Club house and party facilities
- Ample space for function and recreation.
- Water and heat proof system
- Roof terrace garden with panoramic views

## General Specifications

- Fully approved free hold property.
- Dedicated parking slots for property.
- Three high speed passenger elevators serving all levels.
- A/C Provided for master bedroom and provision for other rooms
- Hall and bedroom are fitted with ceiling fans and light fittings.
- Floor to floor height 10.5ft
- TV outlets in hall and master bedroom.
- Telephones outlets in hall and master bedroom.
- Inter communication system from apartment to security
- Stand by generator back up for common areas lighting, elevators,
- Optimal balance in lighting, ventilation and privacy.
- Door to door garbage collection, eliminating the issue of odor and pest in chutes and garbage storage rooms on the floor.
- Fully secured parapet wall right around.
- Lightning conductor.
- Maintenance agency to provide professional maintenance services.
- Water supply from the main line.
- Ground storage sump and over head tank on rooftop with pressure system.
- Close proximity to schools, markets, Hospital and all religious places

**Any additions will be charged:** All materials, fittings & equipments are of international standards-reputed makes, with high quality finish all around. Conformity to all statutory standards & requirements.

**Note:** Terms & Conditions apply. This presentation is not to be construed as a binding offer.



# RUSH METROPOLIS

No. 05 Jayanthi Road, Dehiwala.



# RUSH METROPOLIS

No. 05, Jayanthi Road, Dehiwala

Head Office - No. 31, Melbourne Avenue ,Colombo 04.

Email- [sales@rushlankagroup.com](mailto:sales@rushlankagroup.com)

Website- [www.rushlankagroup.com](http://www.rushlankagroup.com)

 **077 770 7874**



SALES & MARKETING PARTNER

[info@rush2homes.com](mailto:info@rush2homes.com)